



OPERATOR'S MANUAL  
MANUEL de L'UTILISATEUR  
MANUAL del OPERADOR



Cat. No. / No de cat.

204 Series, 224 Series

**M12™ HEATED MULTI-ZONE JACKET**

**VESTE CHAUFFÉE MULTIZONE M12™**

**CHAQUETA CALEFACTADA M12™ DE ZONAS MÚLTIPLES**



**WARNING** To reduce the risk of injury, user must read and understand operator's manual.

**AVERTISSEMENT** Afin de réduire le risque de blessures, l'utilisateur doit lire et bien comprendre le manuel.

**ADVERTENCIA** Para reducir el riesgo de lesiones, el usuario debe leer y entender el manual.

## IMPORTANT SAFETY INSTRUCTIONS

### **WARNING** READ AND UNDERSTAND ALL INSTRUCTIONS.

Failure to follow all instructions listed below, may result in electric shock, fire and/or serious personal injury.

# SAVE THESE INSTRUCTIONS

## WORK AREA SAFETY

•Keep work area clean and well lit. Cluttered or dark areas invite accidents.

## ELECTRICAL SAFETY

•Do not expose heated jacket to rain or wet conditions. Water will increase the risk of electric shock.  
•Do not abuse the power cable. Never use the cord for carrying, pulling or unplugging the heated jacket. Keep cord away from heat, oil, sharp edges or moving parts.

## PERSONAL SAFETY

•Stay alert, watch what you are doing and use common sense when using the heated jacket. Do not use while you are tired or under the influence of drugs, alcohol or medication. A moment of inattention may result in serious personal injury.

## PRODUCT USE AND CARE

•Do not use the heated jacket if the power button does not turn it on and off. Any heated jacket that cannot be controlled with the power button is dangerous and must be repaired.  
•Disconnect the battery pack from the heated jacket before storing. Such preventive safety measures reduce the risk of starting the heated jacket accidentally.  
•Store out of the reach of children and do not allow persons unfamiliar with these instructions to operate the heated jacket. Heated jacket can be dangerous in the hands of untrained users.  
•Maintain heated jacket. Check for breakage of parts and any other condition that may affect the heated jacket's operation. If damaged, have the heated jacket repaired before use.  
•Use the heated jacket in accordance with these instructions, taking into account the working conditions and the work to be performed. Use of the heated jacket for operations different from those intended could result in a hazardous situation.

## BATTERY TOOL USE AND CARE

•Recharge only with the charger specified by the manufacturer. A charger that is suitable for one type of battery pack may create a risk of fire when used with another battery pack.  
•Use heated jacket only with specifically designed battery packs. Use of any other battery packs may create a risk of injury and fire.  
•When battery pack is not in use, keep it away from other metal objects like paper clips, coins, keys, nails, screws, or other small metal objects that can make a connection from one terminal to another. Shorting the battery terminals together may cause burns or a fire.

•Under abusive conditions, liquid may be ejected from the battery; avoid contact. If contact accidentally occurs, flush with water. If liquid contacts eyes, additionally seek medical help. Liquid ejected from the battery may cause irritation or burns.

## SERVICE

•Have your heated jacket serviced by a qualified repair person using only identical replacement parts. This will ensure that the safety of the heated jacket is maintained.

## SPECIFIC SAFETY RULES FOR HEATED JACKETS

Read instructions carefully.

Use:

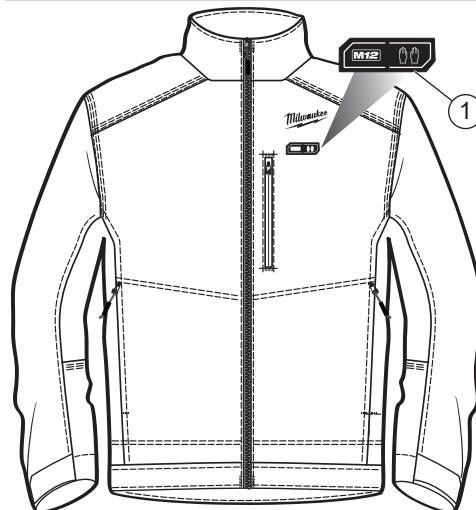
•Do not use this heated jacket with an infant, child, a helpless person, or anyone insensitive to heat, such as a person with poor blood circulation.  
•If you have a medical condition making you sensitive to overheating, or you use any personal medical devices, consult the device manufacturer and/or your physician to determine if use of this product is appropriate.  
•Never use if inner liner is wet.  
•Heating elements are not recommended to touch bare skin.  
•Shut off power immediately if discomfort occurs.  
•Do not allow the cords to be pinched.  
•If improper operation of this heated jacket is observed, discontinue its use immediately and contact a MILWAUKEE service facility for repair.  
•Do not use pins. They may damage the electric wiring.

Care:

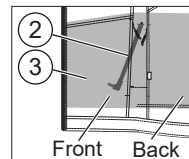
•Before washing, disconnect and remove battery pack and battery holder from battery holder pocket. Push the power cord completely into the battery holder pocket and zip all pockets closed.  
•Follow Care Instructions on jacket tags. Machine wash, Gentle Cycle in warm water. Tumble Dry Low Heat.  
•Do not bleach.  
•Do not iron.  
•Do not wring or twist.  
•Do not dry clean. Do not use dry-cleaning fluid on this heated jacket. Do not bleach. Cleaning solvents may have a deteriorating effect on the insulation of the heating element.  
•Always use common sense and be cautious when using tools. It is not possible to anticipate every situation that could result in a dangerous outcome. Do not use this tool if you do not understand these operating instructions or you feel the work is beyond your capability; contact Milwaukee Tool or a trained professional for additional information or training.  
•Maintain labels and nameplates. These carry important information. If unreadable or missing, contact a MILWAUKEE service facility for a free replacement.

# READ AND SAVE ALL INSTRUCTIONS FOR FUTURE REFERENCE.

## FUNCTIONAL DESCRIPTION



- Jacket and Pocket Power Buttons  
High: Red LED  
Medium: White LED  
Low: Blue LED
- Power Cable
- Battery Controller Pocket



## SYMBOLOLOGY

- Volts
- Direct Current
- Machine wash, gentle cycle in warm water
- Do not bleach
- Do not wring or twist
- Tumble dry, low heat
- Do not iron
- Do not dry-clean

## SPECIFICATIONS

Cat. No. .... 204 Series, 224 Series  
Volts ..... 12 DC  
Battery Type ..... M12™  
Charger Type ..... M12™

## ASSEMBLY

**WARNING** Recharge only with the charger specified for the battery. For specific charging instructions, read the operator's manual supplied with your charger and battery.

### Inserting/Removing the Battery

To insert the battery, slide the pack into the body of the battery controller. Make sure it latches securely into place.

Insert the power cable (from inside the battery controller pocket) into the power cable port on the battery controller.

Push the power cable completely into the battery controller pocket and zip all pockets closed.

To remove the battery, push in the release buttons and pull the battery pack away from the controller.

## OPERATION

The zone power buttons are located on the upper left side of the jacket. Use the jacket and pocket power buttons to control the two zones.

To turn on, press and hold (1 to 2 seconds) the zone's power button. The zone will be turned to High and the red LED will light.

Temperature setting can be adjusted at any time by pressing the zone's power button. Each press will cycle through the zone's temperature settings. To turn off the heated jacket, press and hold (1 to 2 seconds) the zone's power button. The LED will turn off. If the heated jacket turns off unexpectedly, check connections and charge the battery pack.

## JACKET CARE

**WARNING** To reduce the risk of injury, always unplug the charger and remove the battery pack and battery controller from the heated jacket before performing any maintenance. Never disassemble the heated jacket, battery pack or charger. Contact a MILWAUKEE service facility for ALL repairs.

If the heated jacket does not start or operate properly with a fully charged battery pack, clean the contacts on the battery pack. If the heated jacket still does not work properly, return the heated jacket, charger and battery pack, to a MILWAUKEE service facility for repairs.

**WARNING** To reduce the risk of personal injury and damage, disconnect and remove battery pack and battery controller from battery controller pocket before washing. Never immerse your battery controller, battery pack, or charger in liquid or allow a liquid to flow inside them.

To clean the heated jacket:

1. Remove battery pack and battery holder.
2. Push the power cord completely into the battery holder pocket and zip all pockets closed.
3. Machine wash, Gentle Cycle in warm water. Do not use bleach. Do not dry clean. Do not wring or twist.
4. Tumble Dry on Low Heat. Do not iron.

## ACCESSORIES

**⚠️WARNING** Use only recommended accessories. Others may be hazardous.

For a complete listing of accessories, go online to [www.milwaukeeetool.com](http://www.milwaukeeetool.com) or contact a distributor.

## SERVICE - UNITED STATES

**1-800-SAWDUST (1.800.729.3878)**

Monday-Friday, 7:00 AM - 6:30 PM CST  
or visit [www.milwaukeeetool.com](http://www.milwaukeeetool.com)

Contact Corporate After Sales Service Technical Support with technical, service/repair, or warranty questions.

Email: [metproductsupport@milwaukeeetool.com](mailto:metproductsupport@milwaukeeetool.com)

Become a Heavy Duty Club Member at [www.milwaukeeetool.com](http://www.milwaukeeetool.com) to receive important notifications regarding your tool purchases.

## SERVICE - CANADA

**Milwaukee Tool (Canada) Ltd**

**1.800.268.4015**

Monday-Friday, 7:00 AM - 4:30 PM CST  
or visit [www.milwaukeeetool.ca](http://www.milwaukeeetool.ca)

## LIMITED WARRANTY USA & CANADA

Every MILWAUKEE HEATED GEAR product (including its battery holder/controller) is warranted to the original purchaser only to be free from defects in material and workmanship. Subject to certain exceptions, MILWAUKEE will repair or replace any part on a Heated Gear product which, after examination, is determined by MILWAUKEE to be defective in material or workmanship for a period of one (1) year\* after the date of purchase. Return of a Heated Gear product to a MILWAUKEE factory Service Center location, freight prepaid and insured, is required. A copy of the proof of purchase should be included with the return product. This warranty does not apply to damage that MILWAUKEE determines to be from repairs made or attempted by anyone other than MILWAUKEE personnel, misuse, alterations, abuse, normal wear and tear, or accidents.

\*This warranty does not cover a M12™ LITHIUM-ION Battery Pack, a M12™ Charger, or a REDLITHIUM™ USB battery; there are separate and distinct warranties available for these products.

Warranty Registration is not necessary to obtain the applicable warranty on MILWAUKEE Heated Gear products. The manufacturing date of the product will be used to determine the warranty period if no proof of purchase is provided at the time warranty service is requested. ACCEPTANCE OF THE EXCLUSIVE REPAIR AND REPLACEMENT REMEDIES DESCRIBED HEREIN IS A CONDITION OF THE CONTRACT FOR THE PURCHASE OF EVERY MILWAUKEE PRODUCT. IF YOU DO NOT AGREE TO THIS CONDITION, YOU SHOULD NOT PURCHASE THE PRODUCT. IN NO EVENT SHALL MILWAUKEE BE LIABLE FOR ANY INCIDENTAL, SPECIAL, CONSEQUENTIAL OR PUNITIVE DAMAGES, OR FOR ANY COSTS, ATTORNEY FEES, EXPENSES, LOSSES OR DELAYS ALLEGED TO BE AS A CONSEQUENCE OF ANY DAMAGE TO, FAILURE OF, OR DEFECT IN ANY PRODUCT INCLUDING, BUT NOT LIMITED TO, ANY CLAIMS FOR LOSS OF PROFITS. SOME STATES DO NOT ALLOW THE EXCLUSION OR LIMITATION OF INCIDENTAL OR CONSEQUENTIAL DAMAGES, SO THE ABOVE LIMITATION OR EXCLUSION MAY NOT APPLY TO YOU. THIS WARRANTY IS EXCLUSIVE AND IN LIEU OF ALL OTHER EXPRESS WARRANTIES, WRITTEN OR ORAL. TO THE EXTENT PERMITTED BY LAW, MILWAUKEE DISCLAIMS ANY IMPLIED WARRANTIES, INCLUDING WITHOUT LIMITATION ANY IMPLIED WARRANTY OF MERCHANTABILITY OR FITNESS FOR A PARTICULAR USE OR PURPOSE; TO THE EXTENT SUCH DISCLAIMER IS NOT PERMITTED BY LAW, SUCH IMPLIED WARRANTIES ARE LIMITED TO THE DURATION OF THE APPLICABLE EXPRESS WARRANTY AS DESCRIBED ABOVE. SOME STATES DO NOT ALLOW LIMITATIONS ON HOW LONG AN IMPLIED WARRANTY LASTS, SO THE ABOVE LIMITATION MAY NOT APPLY TO YOU. THIS WARRANTY GIVES YOU SPECIFIC LEGAL RIGHTS, AND YOU MAY ALSO HAVE OTHER RIGHTS WHICH VARY FROM STATE TO STATE.

This warranty applies to product sold in the U.S.A. and Canada only. Please consult the 'Service Center Search' in the Parts & Service section of MILWAUKEE's website [www.milwaukeeetool.com](http://www.milwaukeeetool.com) or call 1.800.SAWDUST (1.800.729.3878) to locate your nearest MILWAUKEE factory Service Center location.

## LIMITED WARRANTY USA & CANADA - BATTERY

Every MILWAUKEE REDLITHIUM USB battery and charger\* is warranted to the original purchaser only to be free from defects in material and workmanship. Subject to certain exceptions, MILWAUKEE will repair or replace repair a REDLITHIUM USB battery or charger which, after examination, is determined by MILWAUKEE to be defective in material or workmanship for a period of two (2) years after the date of purchase unless otherwise noted. Return of the REDLITHIUM USB battery or charger to a MILWAUKEE factory Service Center location or MILWAUKEE Authorized Service Station, freight prepaid and insured, is required. For the proper shipping procedure of battery packs, contact 1.800.SAWDUST (1.800.729.3878), or go to [www.milwaukeeetool.com](http://www.milwaukeeetool.com). A copy of the proof of purchase should be included with the return product. This warranty does not apply to damage that MILWAUKEE determines to be from repairs made or attempted by anyone other than MILWAUKEE authorized personnel, misuse, alterations, abuse, normal wear and tear, lack of maintenance, or accidents.

Normal Wear: This warranty does not cover repair or replacement when normal use has exhausted the life of a part including, but not limited to charging cables, and wall plugs.

\*This warranty does not cover any cordless product sold with the REDLITHIUM USB battery and/or charger. There are separate and distinct warranties available for these products.

ACCEPTANCE OF THE EXCLUSIVE REPAIR AND REPLACEMENT REMEDIES DESCRIBED HEREIN IS A CONDITION OF THE CONTRACT FOR THE PURCHASE OF EVERY MILWAUKEE PRODUCT. IF YOU DO NOT AGREE TO THIS CONDITION, YOU SHOULD NOT PURCHASE THE PRODUCT. IN NO EVENT SHALL MILWAUKEE BE LIABLE FOR ANY INCIDENTAL, SPECIAL, CONSEQUENTIAL OR PUNITIVE DAMAGES, OR FOR ANY COSTS, ATTORNEY FEES, EXPENSES, LOSSES OR DELAYS ALLEGED TO BE AS A CONSEQUENCE OF ANY DAMAGE TO, FAILURE OF, OR DEFECT IN ANY PRODUCT INCLUDING, BUT NOT LIMITED TO, ANY CLAIMS FOR LOSS OF PROFITS. SOME STATES DO NOT ALLOW THE EXCLUSION OR LIMITATION OF INCIDENTAL OR CONSEQUENTIAL DAMAGES, SO THE ABOVE LIMITATION OR EXCLUSION MAY NOT APPLY TO YOU. THIS WARRANTY IS EXCLUSIVE AND IN LIEU OF ALL OTHER EXPRESS WARRANTIES, WRITTEN OR ORAL. TO THE EXTENT PERMITTED BY LAW, MILWAUKEE DISCLAIMS ANY IMPLIED WARRANTIES, INCLUDING WITHOUT LIMITATION ANY IMPLIED WARRANTY OF MERCHANTABILITY OR FITNESS FOR A PARTICULAR USE OR PURPOSE; TO THE EXTENT SUCH DISCLAIMER IS NOT PERMITTED BY LAW, SUCH IMPLIED WARRANTIES ARE LIMITED TO THE DURATION OF THE APPLICABLE EXPRESS WARRANTY AS DESCRIBED ABOVE. SOME STATES DO NOT ALLOW LIMITATIONS ON HOW LONG AN IMPLIED WARRANTY LASTS, SO THE ABOVE LIMITATION MAY NOT APPLY TO YOU. THIS WARRANTY GIVES YOU SPECIFIC LEGAL RIGHTS, AND YOU MAY ALSO HAVE OTHER RIGHTS WHICH VARY FROM STATE TO STATE.

This warranty applies to product sold in the U.S.A. and Canada only. Please consult the Find a Service Center Search in the Parts & Service section of MILWAUKEE's website [www.milwaukeeetool.com](http://www.milwaukeeetool.com) or call 1.800.SAWDUST (1.800.729.3878) to locate your nearest MILWAUKEE factory Service Center location.

## RÈGLES GÉNÉRALES DE SÉCURITÉ

**⚠️AVERTISSEMENT** LIRE ET COMPRENDRE TOUTES LES INSTRUCTIONS. Le non-respect des instructions ci-après peut entraîner des chocs électriques, des incendies et/ou des blessures graves.

# CONSERVER CES INSTRUCTIONS

## SÉCURITÉ DU LIEU DE TRAVAIL

• **Conservez l'aire de travail propre et bien éclairée.** Le désordre et le manque de lumière favorisent les accidents.

## SÉCURITÉ ÉLECTRIQUE

• **Ne pas exposer la veste chauffante à la pluie ou à l'humidité.** L'eau accroît le risque de décharge électrique.

• **Ne pas malmener le cordon d'alimentation. Ne jamais utiliser le cordon pour transporter, tirer ou débrancher la veste chauffante.** Tenir le cordon loin de la chaleur, de l'huile, des rebords tranchants et des pièces en mouvement.

## SÉCURITÉ INDIVIDUELLE

• **Rester vigilant, se concentrer sur son travail et faire preuve de bon sens au moment d'utiliser la veste chauffante. Ne pas utiliser cet appareil en cas de fatigue ou sous l'influence de l'alcool, de drogues ou de médicaments.** Un moment d'inattention peut se solder par une blessure grave.

## PRODUCTO DE USO Y CUIDADO

• **Ne pas utiliser la veste chauffante si le bouton « On/Off » (Marche/arrêt) ne permet pas de l'allumer ou de l'éteindre.** Une unité qui ne peut être commandée à l'aide du bouton « On/Off » (Marche/arrêt) est dangereuse et doit être réparée.

• **Débrancher le bloc-piles de la veste chauffante avant de l'entreposer.** De telles mesures de sécurité préventive réduisent le risque de démarrage accidentel de la veste chauffante.

• **Entreposer le produit hors de la portée des enfants et interdire à des personnes non familiarisées avec ces instructions de l'utiliser.** La veste chauffante est dangereuse dans les mains d'utilisateurs novices.

• **Entretenir la veste chauffante. Repérer tout bris ou toute autre condition nuisible au fonctionnement de la veste chauffante. En cas de dommages, faire réparer la veste chauffante avant de l'utiliser.**

• **Utiliser la veste chauffante conformément à ces instructions en tenant compte des conditions de travail et de la tâche à effectuer.** L'utilisation de ce produit pour des tâches pour lesquelles il n'est pas conçu peut créer une situation dangereuse.

## UTILISATION ET ENTRETIEN DE LA BATTERIE

• **Ne recharger qu'avec le chargeur spécifié par le fabricant.** Un chargeur qui convient à un type de bloc piles peut créer un risque d'incendie s'il est utilisé avec un autre bloc-piles.

• **N'utiliser la veste chauffante qu'avec les blocs-piles recommandés.** L'utilisation de tout autre bloc piles peut créer un risque de blessures et d'incendie.

• **Lorsque le bloc-piles n'est pas utilisé, le tenir éloigné des objets en métal tels que les trombones, les pièces de monnaie, les clés, les clous, les vis ou d'autres petits objets métalliques qui pourraient connecter les bornes.** Le court-circuitage des bornes du bloc-piles peut entraîner des brûlures ou un incendie.

• **Éviter tout contact avec le liquide pouvant être éjecté de la batterie en cas de manutention abusive. En cas de contact accidentel, rincer abondamment avec de l'eau.** Si le liquide entre en contact avec les yeux, consulter un médecin. L'électrolyte qui s'échappe de la pile peut causer des démangeaisons ou des brûlures.

## ENTRETIEN

• **Confier la réparation de la veste chauffante à un réparateur qualifié qui utilise des pièces de rechange identiques aux pièces d'origine, ce qui préservera la sûreté du produit.**

## RÈGLES DE SÉCURITÉ SPÉCIFIQUES POUR VESTES CHAUFFÉE

Lire les instructions attentivement.

Utilisation :

• **Ne pas utiliser cette veste chauffante pour un bébé, un enfant, une personne impotente ou quiconque est insensible à la chaleur, comme quelqu'un ayant une mauvaise circulation sanguine.**

• **Si vous souffrez d'une maladie qui vous rend sensible à la surchauffe, ou si vous utilisez un dispositif médical personnel, consultez le fabricant du dispositif et/ou votre médecin afin de déterminer si l'utilisation de ce produit vous est appropriée.**

• **Ne jamais utiliser le produit si la doublure intérieure est mouillée.**

• **Il n'est pas recommandé que les éléments chauffants touchent la peau nue.**

• **Couper immédiatement l'alimentation en cas d'inconfort.**

• **Éviter de coincer les cordons.**

• **Si la veste chauffante fonctionne mal, cesser immédiatement de l'utiliser et communiquer avec un centre de service MILWAUKEE aux fins de réparation.**

• **Ne pas installer d'épinglette. Elles risquent d'endommager le câblage électrique.**

Entretien :

• **Débrancher le bloc-piles et le retirer, avec le porte piles, de leur pochette avant de laver la veste. Veuillez enfoncer complètement le câble d'alimentation dans la poche de batterie et fermez toutes les poches fermées.**

• **Suivez les consignes d'entretien sur la veste. Lavage en machine, tiède, doux. Sèche-linge basse température.**

• **Ne pas blanchir.**

• **Ne pas repasser.**

• **Ne pas tordre.**

• **Ne pas nettoyer à sec.** Ne pas utiliser un liquide de nettoyage à sec avec ce vêtement. Ne pas blanchir. Les solvants de nettoyage peuvent détériorer l'isolation de l'élément chauffant.