



## SERVICE PARTS LIST

**BULLETIN NO.****54-07-3545**

SPECIFY CATALOG NO. AND SERIAL NO. WHEN ORDERING PARTS		REVISED BULLETIN	DATE
<b>360 Laser Mount</b>			Aug. 2020
CATALOG NO.	<b>48-35-1311</b>	WIRING INSTRUCTION	
	STARTING SERIAL NO.		

Inspect sticker applied to the face of the Magnet (2). Orient the Magnet and Steel Strap (1) so that the "N/S" faces in the upward direction relative to the tool. The left (L) is inserted into the left side of the bracket and the right (R) magnet is inserted into the right side. Insert the Magnet and Steel Strap into the mount so that the post aligns with the inner diameter on the magnet. After the Magnet and Steel Strap is inserted into the mount, the sticker can be removed and the screws (4) can be hand tightened. Do not over tighten.

**00**  
**0****EXAMPLE:**

Component Parts (Small #)  
Are Included When Ordering  
The Assembly (Large #).

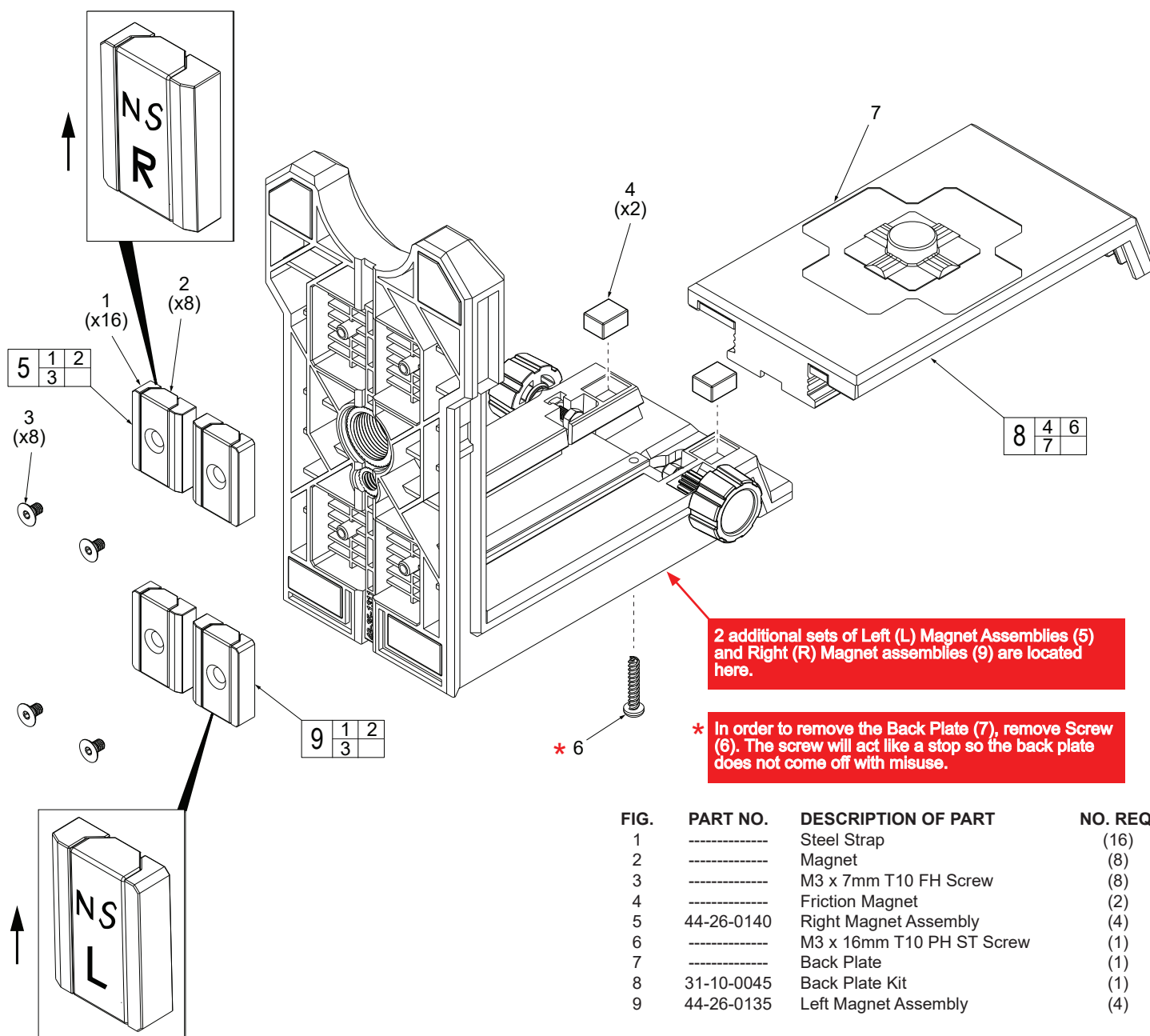


FIG.	PART NO.	DESCRIPTION OF PART	NO. REQ.
1	-----	Steel Strap	(16)
2	-----	Magnet	(8)
3	-----	M3 x 7mm T10 FH Screw	(8)
4	-----	Friction Magnet	(2)
5	44-26-0140	Right Magnet Assembly	(4)
6	-----	M3 x 16mm T10 PH ST Screw	(1)
7	-----	Back Plate	(1)
8	31-10-0045	Back Plate Kit	(1)
9	44-26-0135	Left Magnet Assembly	(4)