



INFILTRATOR
water technologies



Product Catalog

www.infiltratorwater.com



INFILTRATOR

water technologies

ONSITE WASTEWATER TREATMENT SYSTEMS

Infiltrator offers a broad range of products that provide solutions for almost any onsite wastewater system, including:

Drainfields
Septic Tanks
Pump Tanks
Holding Tanks

Site Drainage
Advanced Treatment
Pump Control Panels
Treatment Plants

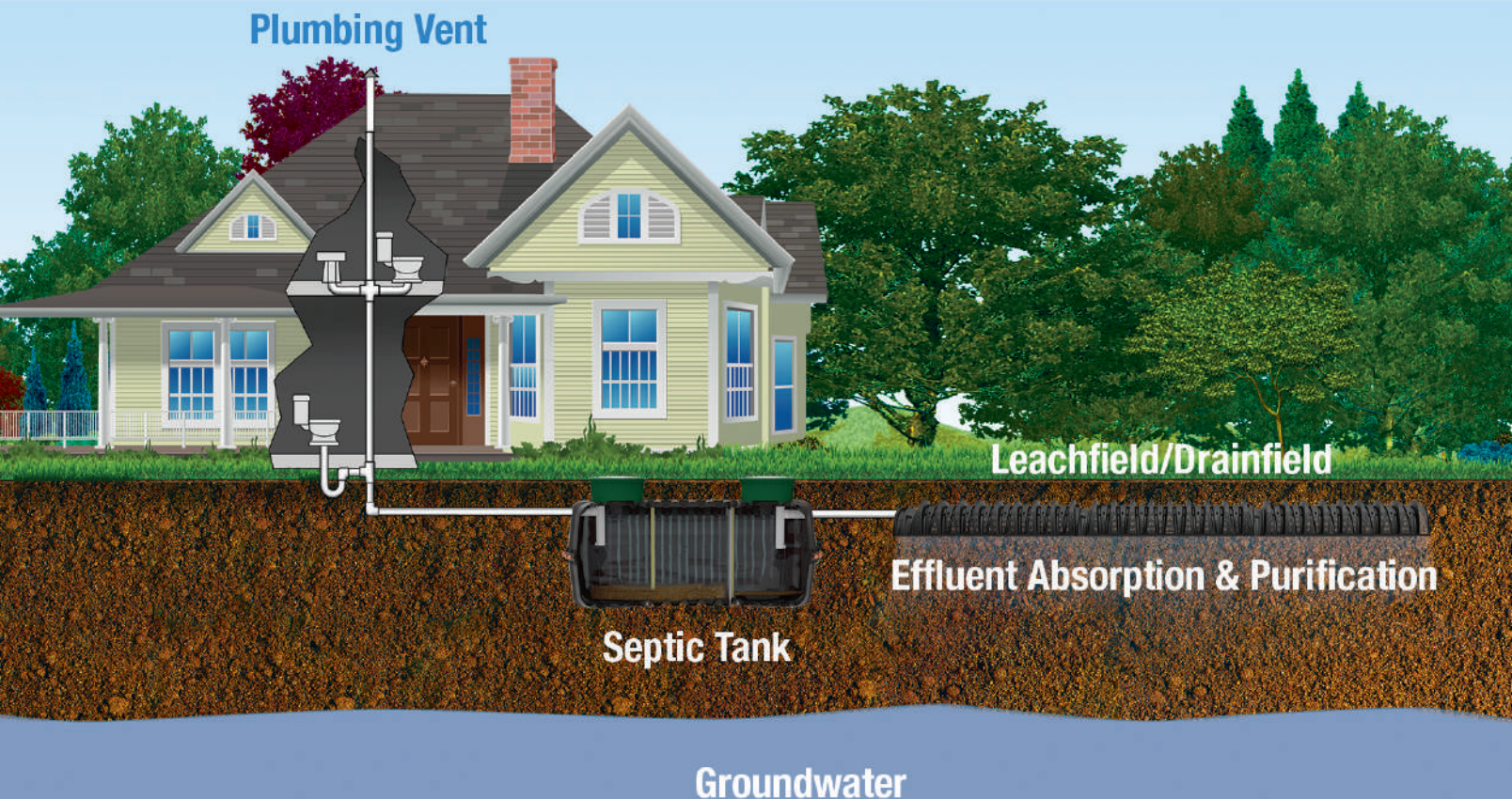
About Infiltrator Water Technologies

A proven leader with over 35 years of experience in the wastewater industry and an array of onsite water management products that allow for faster and more reliable installations.

Quality, reliability and innovation are the cornerstones of our success. Infiltrator chamber systems, tanks, advanced wastewater treatment systems, Aquaworx products, and EZflow septic and drainage systems allow the Infiltrator customer one proven, reliable source for nearly all of their onsite wastewater needs.

Wastewater can be treated by a centralized wastewater treatment plant or by an onsite septic system. About 25% of homes in the United States and Canada rely on an onsite septic system for wastewater treatment.

A septic system has two components: a septic tank and a leachfield or drainfield (soil absorption field). Primary treatment occurs in the septic tank, where bacteria digest organic materials in the wastewater. The effluent then flows into the leachfield for secondary treatment. Here, bacteria complete the digestion and purification process as the wastewater slowly leaches or infiltrates into the soil. Onsite systems for recycling wastewater have become a sustainable long-term solution in places where community public sewer systems are not physically or financially viable. Onsite systems make efficient use of space as land development puts new pressures on natural resources.





Tanks – Septic

2



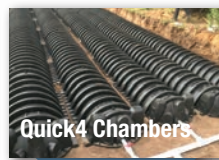
Tanks – Potable

4



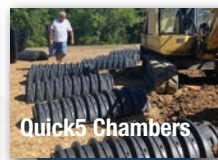
Risers

5



Quick4 Chambers

6



Quick5 Chambers

7

contents

Reimagining Onsite Water Management



Innovation
Since 1987



Drainfield and Tank
Products are Manufactured
with Recycled Material



ISO 9001 Accredited
Manufacturing Facilities



Distinct Product Approvals

A TESTED AND PROVEN SUCCESS RATE

- Infiltrator is the leading manufacturer of products for onsite wastewater treatment systems in North America.
- Millions of Infiltrator onsite wastewater drainfield systems have been installed worldwide.
- Beginning in 1987, Infiltrator products have stood the test of time with an established history of performance and reliability.

PRODUCT AVAILABILITY

We have an extensive network of distributors throughout North America. These knowledgeable professionals maintain local inventories of our products and also provide contractors with product delivery and installation support. Plus, Infiltrator has a dedicated and experienced team of sales, customer service, and technical assistance professionals who are focused on the wastewater industry.

RESPONSIVE SERVICE

- Our technical staff and area sales representatives maintain a strong presence where it counts – *in the field*.
- Contractor, designer and engineer training and certification classes are available.
- We offer field demonstrations to help educate contractors and regulators.
- Product brochures, installation manuals, videos, and state- and province-specific design tools are available on our website or by calling our technical service team.

8



Quick4 Plus
Chambers

10



Arc by Infiltrator

12



EZflow Septic

13



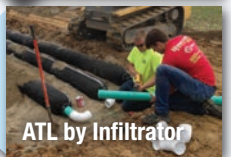
EZflow Drainage

14



Advanced
Enviro-Septic

15



ATL by Infiltrator

15



AeroFin

16



Aquaworx

18



Advanced Treatment
Residential

20



Advanced Treatment
Commercial



www.infiltratorwater.com

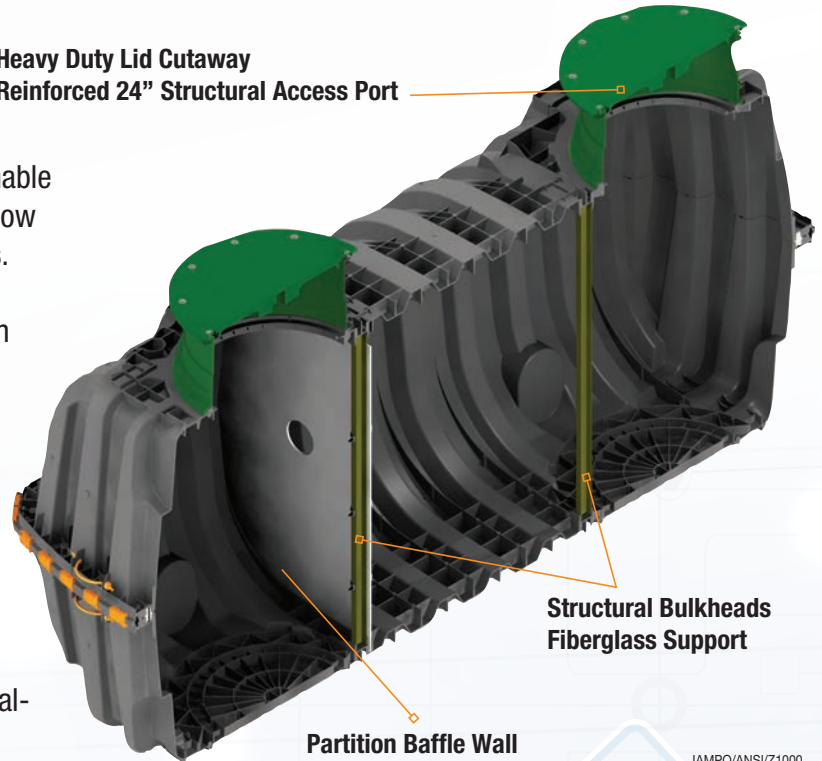
Infiltrator Septic Tanks



The strength and versatility of Infiltrator septic tanks enable a wide-range of installation possibilities, including shallow installations and multiple and serial tank configurations. Infiltrator's lightweight construction allows for easy storage and delivery, and offers the quickest installation in the onsite wastewater industry.

The engineered mid-seam joint accepts a continuous loop EPDM gasket. Infiltrator's EPDM gasket design utilizes technology and materials from the sanitary sewer pipe industry to deliver a reliable watertight seal. The two-piece tank body is permanently aligned and fastened using an integrated system of high-strength plastic alignment dowels and locking seam clips. The tank does not require water filling during installation and can be pumped dry during pump-outs.

Heavy Duty Lid Cutaway
Reinforced 24" Structural Access Port



Structural Bulkheads
Fiberglass Support

Partition Baffle Wall

IAMPO/ANSI/Z1000
CSA B66



The two-piece design is permanently fastened using a system of non-corrosive plastic alignment dowels and locking seam clips.



Benefits

- Lightweight plastic construction and inboard lifting lugs allow for easy delivery and handling
- Structurally reinforced access ports eliminate distortion during installation and pump-outs
- Reinforced structural ribbing and fiberglass bulkheads offer additional strength
- Can be pumped dry during pump-outs (no need to refill with water)
- Suitable for use as a septic tank, trash tank, pump tank, or rainwater (non-potable) tank, in-series or multiple serial tank configurations

All Infiltrator septic tanks are fully assembled and available through our distribution network.

Infiltrator's chambers,
septic tanks and EZflow drainfield
products are manufactured
in the USA from
95% recycled
plastics.



IM-300 Pump Tank

Part Number: (No Plumbing)	IM300P/1/0
Part Number: (Plumbing)	IM300P/1/P
Size:	51"W x 51"L x 51"H (1293 mm x 1293 mm x 1283 mm)
Working Capacity:	278 gal (1052 L)
Total Capacity:	322 gal (1219 L)

The quickest installation
in the onsite industry

Installed with 6" to 48" of cover
* 52" cover for the IM-300

Shallow installations and multiple
and serial tank configurations

300 to 1500 gallon capacity

IM-540 Septic/Pump Tank

Part Number: (No Plumbing)	IM540P/1/0
Part Number: (Plumbing)	IM540P/1/P
Size:	62"W x 65"L x 55"H (1567 mm x 1648 mm x 1387 mm)
Working Capacity:	475 gal (1798 L)
Total Capacity:	552 gal (2090 L)



CM-1060 Septic/Pump Tank

Part Number (Plumbing, One Compartment)	CM1060P/1/P
Part Number (Plumbing, Two Compartment)	CM1060P/2/P
Part Number (No Plumbing, One Compartment)	CM1060P/1/0
Part Number (No Plumbing, Two Compartment)	CM1060P/2/0
Size:	62"W x 134"L x 55"H (1567 mm x 3409 mm x 1384 mm)
Working Capacity:	1111 gal (4207 L)
Total Capacity:	1309 gal (4956 L)

IM-1250 Septic Tank

Part Number (Plumbing, One Compartment)	IM1250P/1/P
Part Number (Plumbing, Two Compartment)	IM1250P/2/P
Part Number (No Plumbing, One Compartment)	IM1250P/1/0
Part Number (No Plumbing, Two Compartment)	IM1250P/2/0
Size:	62"W x 154"L x 55"H (1567 mm x 3911 mm x 1387 mm)
Working Capacity:	1278 gal (4839 L)
Total Capacity:	1480 gal (5602 L)

IM-1530 Septic Tank

Part Number (Plumbing, One Compartment)	IM1530P/1/P
Part Number (Plumbing, Two Compartment)	IM1530P/2/P
Part Number (No Plumbing, One Compartment)	IM1530P/1/0
Part Number (No Plumbing, Two Compartment)	IM1530P/2/0
Size:	62"W x 176"L x 55"H (1567 mm x 4460 mm x 1384 mm)
Working Capacity:	1537 gal (5818 L)
Total Capacity:	1787 gal (6765 L)

IM-Series Potable Water/Rainwater Harvesting Tank



The Infiltrator IM-Series potable water tanks are lightweight, strong and durable. These potable, watertight cisterns are offered with Infiltrator's potable heavy-duty lids. Infiltrator injection-molded tanks provide a revolutionary improvement in plastic tank design, offering exceptional long-term strength and watertightness.

• IM-550C • IM-1280C • IM-1760C



NSF/ANSI 61

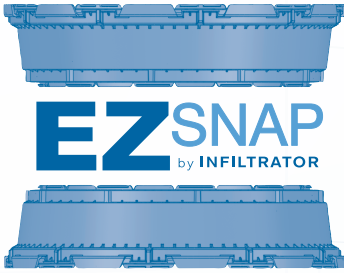


Benefits

- Lightweight plastic construction and inboard lifting lugs allow for easy delivery and handling
- Structurally reinforced access ports eliminate distortion during installation and pump-downs
- Reinforced structural ribbing and fiberglass bulkheads offer additional strength
- Suitable for use as a potable pump tank, rainwater harvesting or water storage tank

Infiltrator IM-Potable Water Tank Series

Parameter	IM-550C	IM-1280C	IM-1760C
Part Number (No Plumbing)	IM550C/1/O	IM1280C/1/O	IM1760C/1/O
Part Number (Plumbing)	IM550C/1/P	IM1280C/1/P	IM1760C/1/P
Total Capacity	552 gal (2090 L)	1287 gal (4872 L)	1787 gal (6764 L)
Length	65 in (1651 mm)	127 in (3229 mm)	176 in (4470 mm)
Width	62 in (1575 mm)	62 in (1575 mm)	62 in (1575 mm)
Height	55 in (1397 mm)	55 in (1397 mm)	55 in (1397 mm)
Fiberglass Supports	0	2	4
Maximum Pipe Diameter	4 in (102 mm)	6 in (152 mm)	4 in (102 mm)



The EZsnap riser is designed to create an easy-to-assemble watertight riser system for septic tanks, pump tanks, and cisterns. The EZsnap riser features click and lock technology, eliminating the need for assembly tools, sealant/ caulk and hardware.

Stackable for efficient shipping and storage



The 24" diameter EZsnap riser is available in black or green with 2", 6" and 12" tall sections.

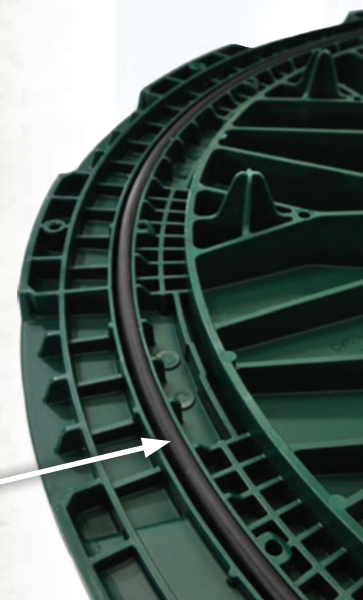
EZsnap 24" Riser System		
Item	Part Number (Green/Black)	Dimensions
24" Riser Lid	IMLID-2400 IMLID-B2400	30" x 30" x 2.75" (762 mm x 762 mm x 70 mm)
Pipe Adapter Ring	SNAPPAR-2400-2	27.75" x 27.75" x 3.5" (705 mm x 705 mm x 89 mm)
24" x 2" Riser	SNAPRIS-2402 SNAPRIS-B2402	27.75" x 27.75" x 3" (705 mm x 705 mm x 76 mm)
24" x 6" Riser	SNAPRIS-2406 SNAPRIS-B2406	27.75" x 27.75" x 7" (705 mm x 705 mm x 178 mm)
24" x 12" Riser	SNAPRIS-2412 SNAPRIS-B2412	27.75" x 27.75" x 13" (705 mm x 705 mm x 330 mm)
24" Safety Star	SNAPSAFT-2400	26.5" x 26.5" x 3.5" (673 mm x 673 mm x 89 mm)



The 24" Safety Star System from Infiltrator is a strong secondary level of protection recommended on all installations to prevent accidental fall or entry into a tank.

Click and lock technology

Watertight Gasket



Quick4 and Quick5 Chambers



- Four-foot chamber lengths are easy to handle and install
- Supports wheel loads of 16,000 lbs/axle with 12" of cover



- Quick4 Standard • Quick4 High Capacity • Quick4 Equalizer 36
- Quick4 Equalizer 24 Low Profile • Quick4 Equalizer 24 • Quick4 Equalizer 24 Heavy Duty

Quick4 Standard Chamber		Part Numbers: Q4STD/Q4STDE	
Application:	36" wide trench, curved, straight or side by side in beds		
Size:	34"W x 53"L x 12"H (864 mm x 1346 mm x 305 mm)		
Effective Length:	48" (1219 mm)		
Multiport Endcap:	Eight molded-in high and low inlets for maximum piping flexibility.		
Size:	34"W x 16"L x 12"H (864 mm x 406 mm x 305 mm)		
Additional Length per Pair of Endcaps:	26.4" (671 mm)	Invert Height:	8" (203 mm)



Quick4 High Capacity Chamber			Part Numbers: Q4HC/Q4HCE	
Application:	36" wide trench, curved, straight or side by side in beds			
Size:	34"W x 53"L x 16"H (864 mm x 1346 mm x 406 mm)			
Effective Length:	48" (1219 mm)			
Multiport Endcap:	Eight molded-in high and low inlets for maximum piping flexibility. Tear-out seals.			
Size:	34"W x 19"L x 16"H (864 mm x 483 mm x 406 mm)			
Additional Length per Pair of Endcaps:	28.8" (732 mm)	Invert Height:	11.5" (292 mm)	



Quick4 Equalizer 36 Chamber		Part Numbers: Q4EQ36/Q4EQ36E	
Application:	24" wide trench, curved, straight or side by side in beds		
Size:	22"W x 53"L x 12"H (559 mm x 1346 mm x 305 mm)		
Effective Length:	48" (1219 mm)		
Multiport Endcap:	Six molded-in high and low inlets for maximum piping flexibility.		
Size:	22"W x 16"L x 12"H (559 mm x 406 mm x 305 mm)		
Additional Length per Pair of Endcaps:	25.2" (640 mm)	Invert Height:	6" (152 mm)



Multiport Endcaps

- Molded-in inlets/outlets allow for piping flexibility

Infiltrator Chamber Features

Contour Swivel Connection™ allows the chamber to swivel up to 15°, right or left
Higher long-term acceptance rate (LTAR) – a reliable top-performing system
Smaller footprint with equal or better performance allows less site disruption
Louvered sidewalls for maximum infiltration
Low profile chambers for shallow placement applications



Quick4 Equalizer 24 Chamber and Equalizer 24 Heavy Duty (HD) Chamber	Part Numbers: Q4EQ24/Q4EQ24E Part Numbers: Q4EQ24HD/Q4EQ24E
---	--

Application:	18" or 24" wide trench, curved, straight or side by side in beds		
Size:	16"W x 53"L x 11"H (406 mm x 1346 mm x 279 mm)		
Effective Length:	48" (1219 mm)		
Multiport Endcap:	Six molded-in high and low inlets for maximum piping flexibility. Tear-out seals.		
Size:	16"W x 14"L x 12"H (406 mm x 356 mm x 305 mm)		
Additional Length per Pair of Endcaps:	22.8" (579 mm)	Invert Height:	6" (152 mm)



Quick4 Equalizer 24 Low Profile Chamber	Part Numbers: Q4EQ24LP / Q4EQ24LPE
--	---

Application:	18" or 24" wide trench, curved, straight or side by side in beds		
Size:	16"W x 53"L x 8"H (406 mm x 1346 mm x 203 mm)		
Effective Length:	48" (1219 mm)		
Endcap:	Offers a simple overlap design for easy installation.		
Size:	14"W x 7"L x 8"H (356 mm x 178 mm x 203 mm)		
Additional Length per Pair of Endcaps:	9" (229 mm)	Invert Height:	2" (51 mm)



Quick5
CHAMBER SYSTEMS

- Five-foot chamber lengths are easy to handle and install
- Supports wheel loads of 16,000 lbs/axle with 12" of cover

• Quick5 Standard • Quick5 Equalizer 36

Quick5 Standard Chamber	Part Numbers: Q5STD/Q4STDE
--------------------------------	-----------------------------------

Application:	36" wide trench, curved, straight or side by side in beds		
Size:	34"W x 65"L x 12"H (864 mm x 1651 mm x 305 mm)		
Effective Length:	60" (1524 mm)		
Multiport Endcap:	Eight molded-in high and low inlets for maximum piping flexibility.		
Size:	34"W x 16"L x 12"H (864 mm x 406 mm x 305 mm)		
Additional Length per Pair of Endcaps:	26.4" (671 mm)	Invert Height:	8" (203 mm)



Quick5 Equalizer 36 Chamber	Q5EQ36/Q4EQ36E
------------------------------------	-----------------------

Application:	36" wide trench, curved, straight or side by side in beds		
Size:	22"W x 65"L x 12"H (559 mm x 1651 mm x 305 mm)		
Effective Length:	60" (1524 mm)		
Multiport Endcap:	Six molded-in high and low inlets for maximum piping flexibility.		
Size:	22"W x 16"L x 12"H (559 mm x 406 mm x 305 mm)		
Additional Length per Pair of Endcaps:	28.8" (732 mm)	Invert Height:	11.5" (292 mm)



Quick4 Plus Chambers



Infiltrator chambers give designers, installers and owners greater flexibility in the placement of the septic drainfield.

- Quick4 Plus Standard
- Quick4 Plus High Capacity

- Four-foot chamber lengths are easy to handle and install
- Supports wheel loads of 16,000 lbs/axle with 12" of cover

Quick4 Plus Standard Chamber		Part Number: Q4+STD
Application:	36" wide trench, curved, straight or side by side in beds	
Size:	34"W x 53"L x 12"H (864 mm x 1346 mm x 305 mm)	
Effective Length:	48" (1219 mm)	
Endcap:	Quick4 Plus All-in-One 12	

Quick4 Plus High Capacity Chamber		Part Number: Q4+HC
Application:	36" wide trench, curved, straight or side by side in beds	
Size:	34"W x 53"L x 14"H (864 mm x 1346 mm x 356 mm)	
Effective Length:	48" (1219 mm)	
Endcap:	Quick4 Plus All-in-One 12	

Quick4 Plus All-in-One 12 Endcap		Part Number: Q4+A112E	
Application:	Use at either end of a chamber row for an inlet/outlet or can be installed mid-trench. Side, end or top inletting. Compatible with Quick4 Plus Standard and Quick4 Plus High Capacity Chambers.		
Size:	34"W x 20.5"L x 13"H (864 mm x 520 mm x 330 mm)		
Additional Length per Pair of Endcaps:	37" (940 mm)	Additional Length when used midline:	11.4" (290 mm)
Invert Height:	5.3", 8" (134 mm, 203 mm)	Optional Accessory:	All-in-One Periscope

Quick4 Plus All-in-One Periscope		Part Number: Q4+P
Application:	Allows for raised, invert installations with 180° directional inletting. All-in-One 8 Endcap: 9" raised invert. All-in-One 12 Endcap: 13" invert.	
Size:	5"W x 9"L x 6"H (127 mm x 229 mm x 152 mm)	
Invert Height:	9", 13" (229 mm, 330 mm)	



Added Strength Through Center Structural Columns



- Quick4 Plus Standard Low Profile
- Quick4 Plus Equalizer 36 Low Profile

Quick4 Plus Standard Low Profile (LP) Chamber		Part Number: Q4+STDLP
Application	Reduced height applications, 4" shorter than standard chambers. 36" wide trench, curved, straight or side by side in beds	
Size	34"W x 53"L x 8"H (864 mm x 1346 mm x 203 mm)	
Effective Length	48" (1219 mm)	
Endcap	Quick4 Plus All-in-One 8 or Quick4 Plus	



Quick4 Plus Equalizer 36 Low Profile (LP) Chamber		Part Number: Q4+EQ36LP
Application	Reduced height applications, 4" shorter than standard chambers. 24" wide trench, curved, straight or side by side in beds	
Size	22"W x 53"L x 8"H (559 mm x 1346 mm x 203 mm)	
Effective Length	48" (1219 mm)	
Endcap	Quick4 Plus All-in-One 8 or Quick4 Plus	



Quick4 Plus All-in-One 8 Endcap				Part Number: Q4+A1E
Application:	Use at either end of a chamber row for an inlet/outlet or can be installed mid-trench. Side, end or top inletting. Compatible with Quick4 Plus Low Profile Chambers.			
Size:	18"W x 13"L x 8"H (457 mm x 330 mm x 203 mm)			
Additional Length per Endcap:	10.4" (264 mm)	Invert Height:	3.3" (84 mm)	Optional Accessory: All-in-One Periscope



Quick4 Plus Endcap			Part Number: Q4+E
Application:	Simple, flat design that allows for a pipe installation at the end of the chamber row. Piping drill points are set for gravity or pressure pipe. Compatible with Quick4 Plus Low Profile Chambers.		
Size:	18"W x 7"L x 8"H (457 mm x 178 mm x 203 mm)		
Additional Length per Endcap:	4.5" (114 mm)	Invert Height:	3.3" (84 mm)



Low profile chambers are ideal for shallow applications.

Arc by Infiltrator Chambers



Arc 18 • Arc 24 • Arc 36
Arc 36 LP • Arc 36 HC
Arc Side Port Coupler

Diamond plate texture increases slip resistance and enhances ease of installation.



Chamber Requirements

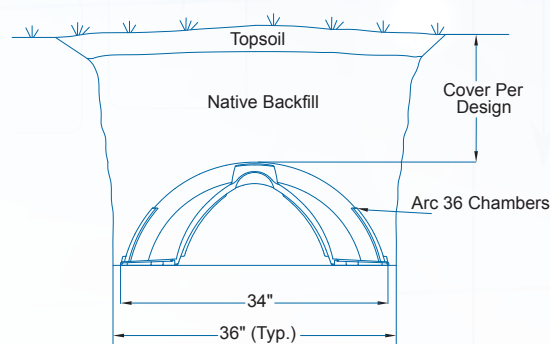
All of Infiltrator's chambers meet the load rating of H-10 (16,000 lb per axle) with a minimum of 12 inches of cover when tested in accordance with IAPMO PS 63* and installed in accordance with manufacturer's installation procedures.

** Excludes Arc 36 Low Profile*

Arc by Infiltrator Chamber Features

Injection-molded from polyolefin for lightweight and sturdy design
20-degree integral articulating joint that is ideal for either straight or contoured septic drainfield applications
Designed to accommodate both gravity-fed and pressure-dosed systems
Corrugated chamber design eliminates flat surfaces and provides increased load bearing capability in the trench
"Lock and Drop" joint provides a positive connection during installation and backfill
The inlet/outlet endcap is universal
Convenient five-foot lengths are easy to handle
Increased plumbing option with Side Port Coupler component which snaps in place to allow side entry at any joint throughout trench line
Inspection vent ports on every unit with easy-to-remove knockouts for maximum job site flexibility

Typical Arc Trench Cross Section



Arc 18 Chamber		Part Numbers: 1812BD-PP/1802BD	
Application:	18 or 24" wide trench, curved, straight or side by side in beds		
Size:	16"W x 67"L x 11"H (406 mm x 1702 mm x 279 mm)		
Effective Length:	60" (1524 mm)	Invert Height:	6" (152 mm)



Arc 24 Chamber		Part Numbers: 2412BD3/2402BD	
Application:	24" wide trench, curved, straight or side by side in beds		
Size:	22"W x 67"L x 12"H (559 mm x 1702 mm x 305 mm)		
Effective Length:	60" (1524 mm)		
Side Port Coupler: five molded-in high and low inlets for mid-trench piping flexibility.			
Size:	22"W x 9"L x 12"H (559 mm x 229 mm x 305 mm)		
Additional Length per Pair of Endcaps:	12" (305 mm)	Invert Height:	6.25" (159 mm)



**Arc 24
Side Port Coupler**



Arc 36 Chamber		Part Numbers: 3613BD3-PP/3603BD3	
Application:	36" wide trench, curved, straight or side by side in beds		
Size:	34"W x 63"L x 13"H (864 mm x 1600 mm x 330 mm)		
Effective Length:	60" (1524 mm)		
Side Port Coupler: five molded-in high and low inlets for mid-trench piping flexibility.			
Size:	34"W x 17"L x 13"H (864 mm x 432 mm x 330 mm)		
Additional Length per Pair of Endcaps:	14" (356 mm)	Invert Height:	7.25" (184 mm)



**Arc 36
Side Port Coupler**



Arc 36 LP Chamber		Part Numbers: 3608BD-PP/3624LPEC	
Application:	36" wide trench, curved, straight or side by side in beds		
Size:	34"W x 64"L x 8"H (864 mm x 1626 mm x 203 mm)		
Effective Length:	60" (1524 mm)		
Invert Height:	3.8" (197 mm)		



Arc 36 High Capacity Chamber		Part Numbers: 3616BD3-PP/3606BD2	
Application:	36" wide trench, curved, straight or side by side in beds		
Size:	34"W x 63"L x 16"H (864 mm x 1600 mm x 406 mm)		
Effective Length:	60" (1524 mm)		
Side Port Coupler: five molded-in high and low inlets for mid-trench piping flexibility.			
Size:	34"W x 17"L x 16"H (864 mm x 432 mm x 406 mm)		
Additional Length per Pair of Endcaps:	14" (356 mm)	Invert Height:	10.5" (267 mm)



**Arc 36 HC
Side Port Coupler**



Side Port Coupler

Each Arc chamber model has an accompanying accessory called the Side Port Coupler (SPC). The SPC component snaps in place to allow additional pivoting space when used mid-line. The SPC offers flexibility of pivoting when installed in series between two chambers within the chamber line to allow for increased turning capability.

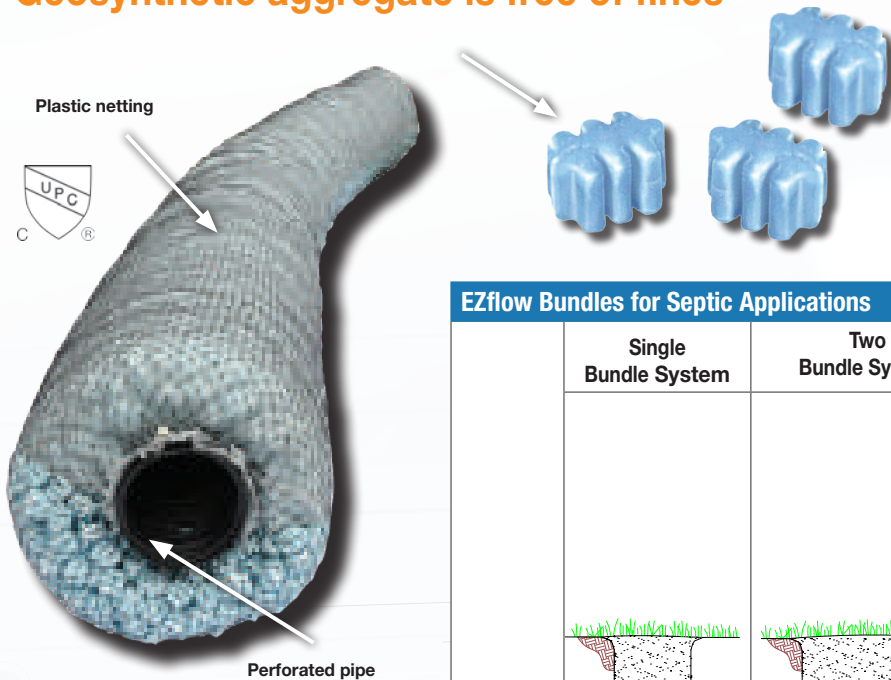


EZflow is an environmentally friendly replacement for stone and pipe in septic drainfields using an engineered geosynthetic aggregate modular design.

EZflow is certified by IAPMO and the ICC-ES PMG Listing Program.

An EZflow system is designed to improve infiltrative performance by eliminating fines and reducing compaction and embedment associated with crushed stone. Pre-assembled units include a 4" perforated pipe surrounded by aggregate covered in geotextile and held in place with a durable high-strength netting. Available in easy-to-contour 5' and 10' lengths in diameters of 7", 8", 9", 10", 12", 13", 14" or 18".

Geosynthetic aggregate is free of fines



Lightweight expanded polystyrene construction offers structural integrity and resists compaction. Engineered flow channels increase void space creating improved water flow and greater effluent storage. Extended geotextile barrier eliminates intrusion through unprotected surfaces.

Benefits

- Always clean and free of fines
- Bundles are quick to install, using simple snap internal couplers, saving costs on heavy machinery and labor
- Modular construction allows configurations to match trench dimensions for most system configurations
- Engineered for optimal effluent storage and absorption efficiencies
- Ability to contour along sloped sites and around trees or landscaping
- Lightweight, 5' or 10' lengths are perfect for repairs and tight job sites
- Easier cleanup at job site with the elimination of stone
- Manufactured from recycled materials rather than mined natural resources

EZflow Bundles for Septic Applications

	Single Bundle System	Two Bundle System	Three Bundle System	Four Bundle System
Diameter				
10"	1001-P-GEO 1001-P	1002-GEO-SEP	1003-GEO-SEP 1003-SEP	—
12"	1201-P-GEO 1201-A-GEO	1202-GEO-SEP	1203-GEO-SEP 1203-SEP	1204-GEO-SEP
13"	—	—	1303-GEO-SEP	—
14"	1401-P-GEO	—	—	—
18"	1801-P-GEO	—	—	—

P = Pipe (Corrugated Polyethylene Pipe ASTM F667)
A = Aggregate only bundle

GEO = Geotextile Integrated
SEP = Septic Configuration

Applications

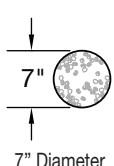
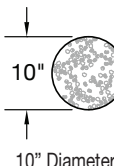
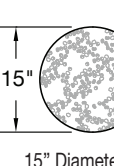
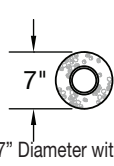
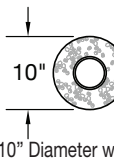
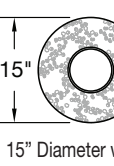
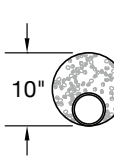
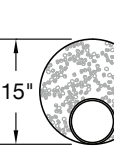


Lightweight expanded polystyrene aggregate offers structural integrity and resists compaction

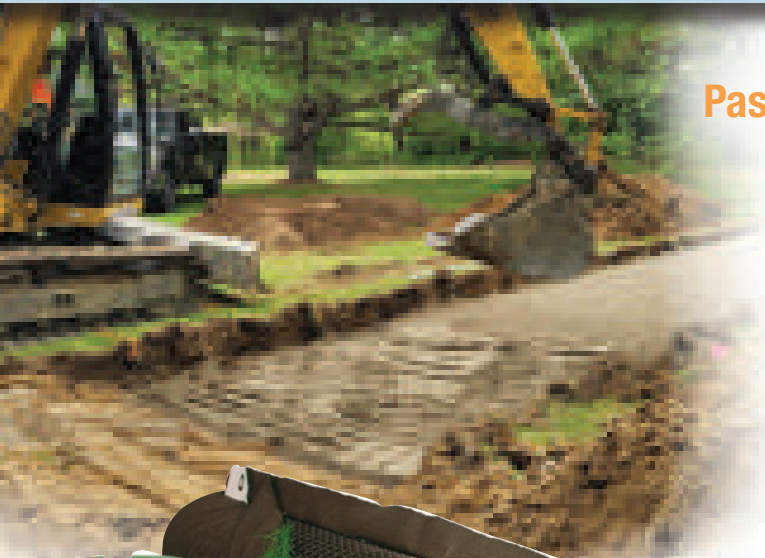
Benefits

- Convenient 10' long sections are easy to connect using internal couplers
- EZflow products can be easily transported and installed by a single worker, dramatically reducing labor costs
- Superior flow rate when compared to gravel due to lack of fines
- EZflow drainage systems have high storage capacity created by the engineered flow channels in the aggregate
- EZflow's aggregate-pipe combination and aggregate-only bundles can easily bend around corners and other obstacles to conform to your project's needs
- Using EZflow recycled polystyrene aggregate prevents millions of pounds of plastic waste from entering landfills

EZflow Bundles for Drainage Applications

7" Bundles		10" Bundles		15" Bundles	
Part #	Description	Part #	Description	Part #	Description
701-A-MESH	 7" Diameter	1001-A-MESH	 10" Diameter	1501-A-MESH	 15" Diameter
701-F-MESH	 7" Diameter with 3" Pipe in Center	1001-FC-MESH	 10" Diameter with 4" Pipe in Center	1501-FC-MESH	 15" Diameter with 6" Pipe in Center
		1001-FB-MESH	 10" Diameter with 4" Pipe at Bottom	1501-B-MESH	 15" Diameter with 6" Pipe at Bottom

Combined Treatment and Dispersal



Passive Onsite Wastewater Treatment Systems

Combined treatment and dispersal (CTD) systems are non-mechanical, non-biodegradable, low long-term life cycle cost systems for residential, commercial, and community onsite wastewater treatment system designs. Infiltrator's combined treatment and dispersal (CTD) products offer a high level of treatment in a small footprint.

ADVANCED
ENVIROSEPTIC[™]



Advanced Enviro-Septic® (AES) passively creates a powerful biological ecosystem that continually digests organic matter in wastewater. Along with other patented components, AES also features the Bio-Accelerator® fabric, which speeds the development of the biomat and allows for distribution of wastewater along the entire length of the pipes. The AES treatment system has been proven to remove up to 99% of wastewater impurities without the need for electricity or replacement media.

Testing in accordance with NSF/ANSI 40 has determined that the AES system is capable of treating domestic strength wastewater to Class I levels.

NSF Testing Parameters	AES Test Results
BOD <25 mg/L	8 mg/L
TSS <30 mg/L	4 mg/L

Advanced Enviro-Septic Features

Treats and disperses wastewater in the same footprint
No electricity, replacement media or additional maintenance required
Flexible configurations for sloped or curved sites
Can be used in traffic rated H2O configurations

Advanced EnviroSeptic (AES)		
Item	Part Number	Dimensions
Advanced EnviroSeptic Pipe Unit 10'	AES Unit	120" x 12" x 12" (3048 mm x 305 mm x 305 mm)
EnviroSeptic Pipe 10'	ESP-UNIT	120" x 12" x 12" (3048 mm x 305 mm x 305 mm)
EnviroSeptic Coupling	ESC	7" x 12" x 12" (178 mm x 305 mm x 305 mm)
EnviroSeptic Offset	ESO	5" x 12" x 12" (127 mm x 305 mm x 305 mm)
End Cap	ESE	5" x 12" x 12" (127 mm x 305 mm x 305 mm)



AeroFin

An effective solution for compact lots and sites with footprint constraints. Demonstrated to the removal of up to 99% of wastewater impurities.



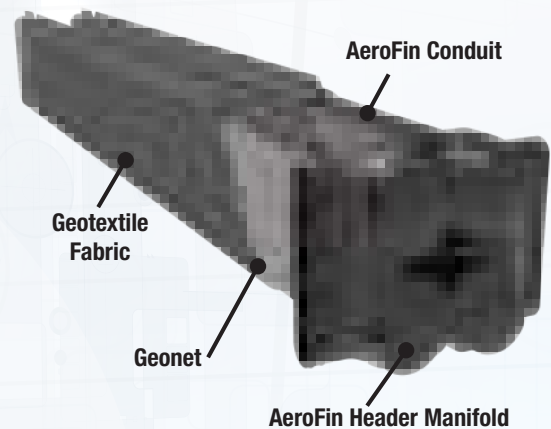
AeroFin Features

Testing in accordance with NSF/ANSI 40 has determined that the AeroFin system is capable of treating domestic strength wastewater to Class I levels

Treats and disperses wastewater in the same footprint

No electricity, replacement media or additional maintenance

Aerofin		
Item	Part Number	Dimensions
AeroFin Unit	AF08	98" x 2.25" x 12.75" (2489 mm x 57 mm x 324 mm)
AeroFin Manifold	AFM	17.75" x 7.88" x 14.50" (451 mm x 200 mm x 368 mm)
AeroFin Cap	AFEC	3.75" x 2.50" x 13.13" (95 mm x 63 mm x 333 mm)
AeroFin Install Tool	AFIT	



ATL by Infiltrator Features

Testing in accordance with NSF/ANSI 40 has determined that the ATL system is capable of treating domestic strength wastewater to Class I levels

Passive treatment system, no moving parts or power

Modules are quick and easy to install

Shallow system maximizes site suitability and reduces amount of sand fill required

No venting and sand cover requirements



A passive advanced treatment leachfield system designed as an environmentally friendly alternative to stone and pipe drainfields, the ATL system is a sand-lined treatment and dispersal leachfield system.



ATL by Infiltrator		
Item	Part Number	Dimensions
ATL 10' Length	ATL-010	120" x 12" x 12" (3048 mm x 305 mm x 305 mm)
4" Coupler-Internal	AC-COUPLER-4	4" x 8" x 4" (102 mm x 203 mm x 102 mm)
Corrugated Pipe Adapter 4"	AC-IT44CC	4" x 8" x 4" (102 mm x 203 mm x 102 mm)
4" Plug Internal	AC-PLUG-4	4" x 3" x 4" (102 mm x 76 mm x 102 mm)



Benefits

- Simplified wiring for easy installation
- Unique user interface with Mountable and Removable Controller (MARC™)
- Data logging provides easy access to historical data
- Accurate timings eliminates need for a stopwatch
- Liquid level displayed for draw-downs means no tape measure required
- Veto level override function allows different timing at different loads
- Manual / Off / Auto Operation
- Audible alarm with push to silence
- Floatless pressure transducer in the pump chamber

The Aquaworx Intelligent Pump Control panel provides an innovative approach to pump control.

Simplex Control Panel Part Number IPC-S01



Designed specifically for the onsite industry, the IPC Panel leverages simple pressure transducer technology for the enhancement of pump system performance and ease of installation. Relying on an embedded microprocessor in the pump controller and a floatless pressure transducer in the pump chamber, the IPC Panel monitors liquid levels, controls pumping time intervals, and logs events in real-time.

The MARC™ Part Number MAR-04

The IPC Panel utilizes the MARC™ to operate and collect system data. The MARC is a user friendly interface to monitor and operate the IPC panels.



The Tapper Part Number TAPR-01

The Tapper broadcasts a wireless signal that is specifically designed to allow the user to program the Aquaworx IPC Panel using a Wi-Fi enabled device. The Tapper connects to the panel using a standard RJ45 cable (included) and communicates via a Wi-Fi connection to a Wi-Fi enabled device such as a mobile phone, tablet or laptop computer. Once connected, the user navigates to a website that has all control settings for the IPC Panel. The Tapper is intended for use with multiple panels and includes a USB slot, allowing the user to capture and download system events and settings onto a removable USB memory device.

The Transducer Part Number TRN-40, TRN-80, TRN-120

The Aquaworx Transducer Assembly connects to the panel with a wire cable, making it easier to wire and more cost effective than a float system. With most mechanical systems, floats trigger the timer and alarms at specific liquid levels. For each level, a function and float are required, and typically three to five floats are installed.

Aquaworx utilizes a Transducer Assembly that controls multiple functions, providing the data necessary to perform system functions.





Remediator

Part Number P40: RKT-03

Part Number P80: RKT-02

Rejuvenate a Failing Drainfield

The Aquaworx Remediator is a simple, easy-to-install septic system remediation technology that rejuvenates a failing drainfield with minimal landscape disruption. The unique system is inserted into an existing septic tank of a malfunctioning system and reverses the drainfield clogging process.



A Proven Track Record

More than 7,000 malfunctioning septic systems have been restored to normal operation with this bioremediation technology.

The Aquaworx Remediator is a technology that is accepted or approved as a septic system repair by numerous regulatory agencies.



Benefits

- Eliminate the need for a complete drainfield replacement and the resulting landscape damage caused by heavy equipment
- Problems associated with a malfunctioning septic system such as odors and wet areas in the yard are eliminated in as little as two weeks
- Environmental solution that strengthens the natural process of wastewater treatment and groundwater recharge
- Easy installation with no heavy equipment allows for minimal disruption and quick return on investment
- Permanent, non-invasive solution with minimal cost to operate and maintain

Aquaworx Remediator

Column Diameter at Base:	15" (381 mm)
Total Height:	30" (762 mm)
Weight:	38 lbs (17 kg)
Flow Rate:	600 gal/day (2271 L) for a 4 bedroom house
Air Pump Weight:	13 lbs (6 kg)
Air Pump Dimensions:	6.8"W x 8.2"L x 7.5"H (173 mm x 208 mm x 191 mm)



Nitrogen Reducing Residential Wastewater Treatment System

The ECOPOD-NX is a recirculating moving bed bioreactor designed to treat residential wastewater. It utilizes fully submerged media and an air lift to facilitate recirculation that promotes greater denitrification. The design has been certified to NSF/ANSI 40 and 245 with average effluent quality of 7 mg/L BOD and 7 mg/L TSS.



Certified to NSF/ANSI Standards 40 & 245

**80% Total
Nitrogen Reduction**



Benefits

- Ideal for markets with more stringent nitrogen reduction requirements
- For one and two tank configurations.
- Easy to transport and install single tank configuration
- Robust reliable treatment with moving bed media
- Designed specifically to minimize sludge production for lower long-term maintenance
- Patented non-clogging air delivery system



**Moving Bed Media provides
a robust solution suitable for
continuous or intermittent use**

**ECOPOD-NX Units are
available in the following sizes:**

- **Model E50-NX1060 for the 2 tank configuration**
- **Model E50-NX1530 for the 1 tank configuration**



NSF/ANSI 40 AND 245 Residential Wastewater Treatment System

ECOPOD-N is the clear choice for an onsite wastewater disposal system where nitrogen reduction is required. It has been tested under Standard 40 and 245 of NSF/ANSI with an average nitrogen reduction of greater than 50% and met and exceeded Class 1 requirements with an average effluent quality of 9 mg/L BOD5 and 8 mg/L TSS.



Certified to NSF/ANSI
Standards 40 & 245

**Nitrification and
denitrification occur
in a single tank.**



Benefits

- The fixed film process provides a robust solution suitable for continuous or intermittent use
- Flexible and easy installations in any septic tank
- With no mechanical parts internal to the unit, the ECOPOD is easy to maintain

**ECOPOD-N units are available
from 500 gpd to 1,500 gpd**

ENVIRO-AIRE treatment units utilize long-standing wastewater treatment technology and scale it to residential daily flow rates. The design has been certified to NSF/ANSI 40 with average effluent quality of 12 mg/L BOD and 16 mg/L TSS.

**ENVIRO-AIRE is manufactured for
wastewater flows up to 750 gpd.**



Certified to NSF/ANSI
Standard 40

Benefits

- Industry proven solution with NSF/ANSI 40 certification
- Flexible and easy installations in a single Infiltrator tank
- No mechanical parts, easy to maintain
- Low life cycle costs resulting from efficient design with minimal maintenance requirements



Adding the ENVIRO-AIRE treatment unit to an onsite system provides a three-step process to treat incoming wastewater resulting in highly treated effluent suitable for a variety of disposal methods and challenging site conditions.

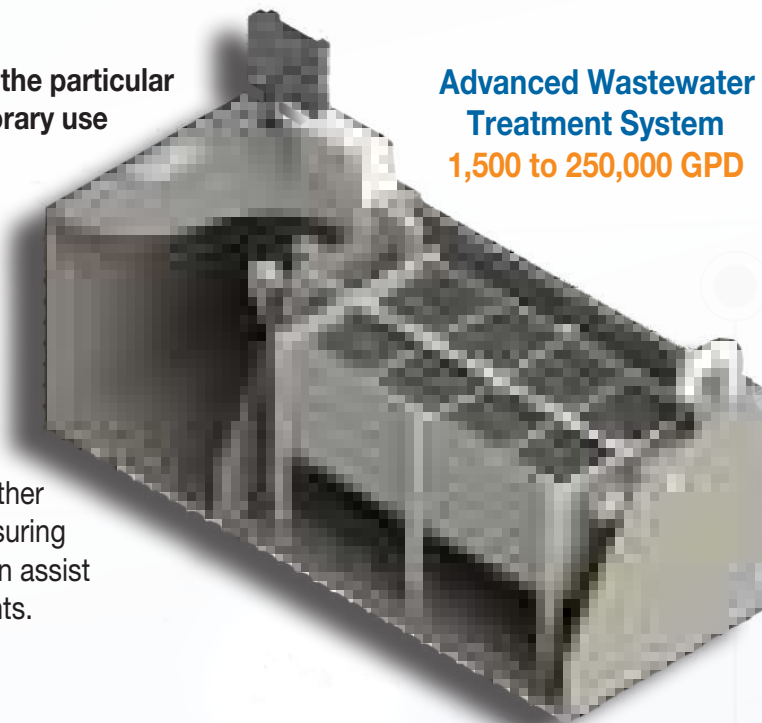


ECOPOD Treatment Plants are designed to convert flows of 1,500 to 100,000 gallons per day into clear and odor-free treated effluent.

The ECOPOD treatment plants are custom designed to the particular needs of each project. Suitable for permanent or temporary use in areas outside municipal wastewater systems, each treatment plant is custom-built at the factory and shipped to the treatment plant project site.

Secondary and tertiary treatment systems include aeration, settling, filters, clear well chambers, disinfection methods and other ancillary equipment such as blowers, pumps, electrical controls, aeration equipment, filter media and liquid level sensors. Other items, such as gratings, handrails, stairways and flow measuring equipment can be provided. An Infiltrator representative can assist you in specifying the system that will meet your requirements.

Advanced Wastewater Treatment System
1,500 to 250,000 GPD



TYPICAL APPLICATIONS

Convenience Store • Restaurant/Bar • RV Park • School • Subdivision • Mixed Commercial Campground
Factory • Hotel/Resort • Apartments/Condos • Commercial • Event/Conference Venue • Mobile Home Park
Religious Facility • State/National Park • Alcoholic Beverage Production • Government/Military
Mixed Residential • Assisted Living • Butchery Man Camp • Power Plant • Public Open Space

The Clear Wastewater Treatment Solution for Remote Locations

Extended Aeration
1,500 to 250,000 GPD

Suitable for permanent or temporary use in areas outside municipal wastewater systems, each ENVIRO-AIRE treatment plant is custom built at the factory and shipped to the project site as a self-contained unit that requires only minimal field work. These extended aeration plants can be as simple as secondary treatment or as complex as a system for biological nutrient reduction.



ISO 9001 Certified Manufacturing Operations

**Leading the Industry
in Water and Wastewater Products**



Infiltrator Water Technologies manufactures and sells multiple product lines that meet stringent environmental and regulatory requirements for decentralized wastewater and water systems. The Infiltrator team built three of the world's largest injection molding machines in-house which produce a number of the largest injection molded parts in the world. Infiltrator is a leader in the use of "green materials" including post-consumer and post-industrial recycled plastics for the manufacture of products at their ISO 9001 registered manufacturing facility in Winchester, KY. The company holds 140 granted or pending patents.



**Find technical
information and
helpful videos online
at www.infiltratorwater.com!**



INFILTRATOR

water technologies

PO Box 768 • Old Saybrook, CT 06475
Phone: (800) 221-4436 • Fax: (860) 577-7001
www.infiltratorwater.com
info@infiltratorwater.com

Distributed By:



For U.S. Patents information visit www.infiltratorwater.com/patents. Other patents pending. Infiltrator, Quick4 and EZflow are registered trademarks of Infiltrator Water Technologies. Infiltrator Water Technologies is a wholly-owned subsidiary of Advanced Drainage Systems, Inc. (ADS).