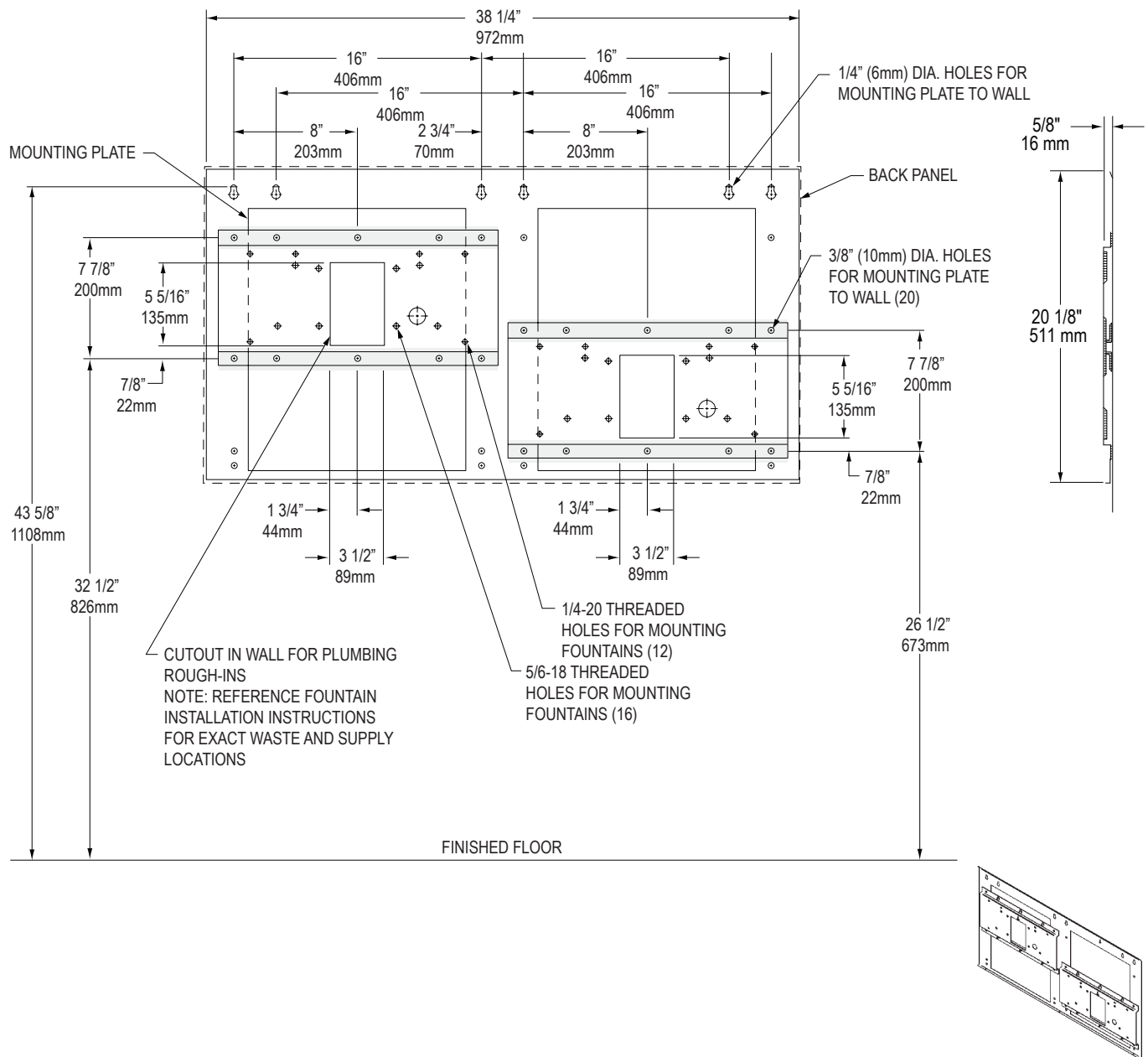
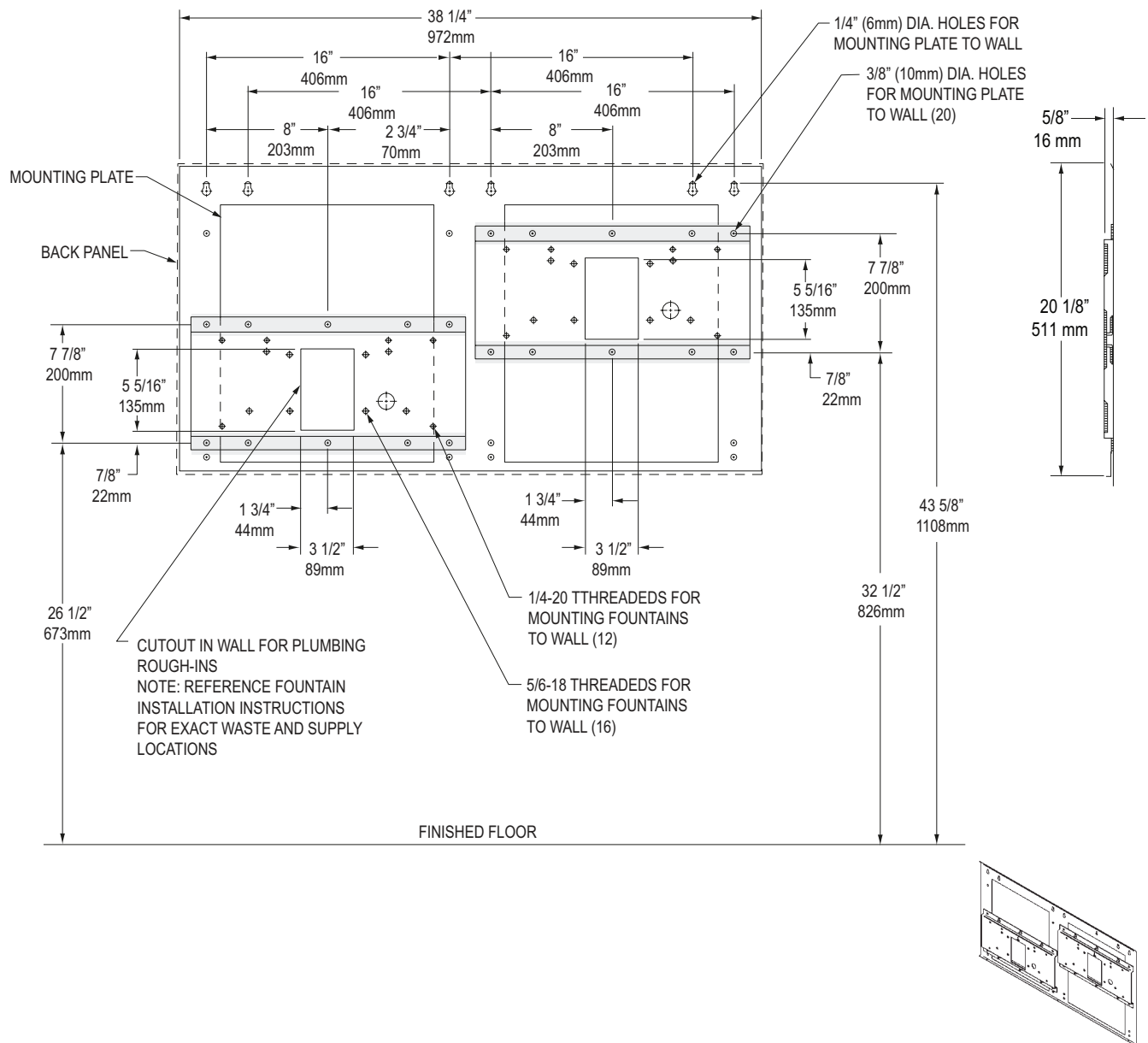


# MP20 MOUNTING PLATE INSTRUCTIONS



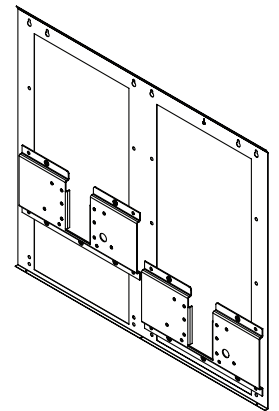
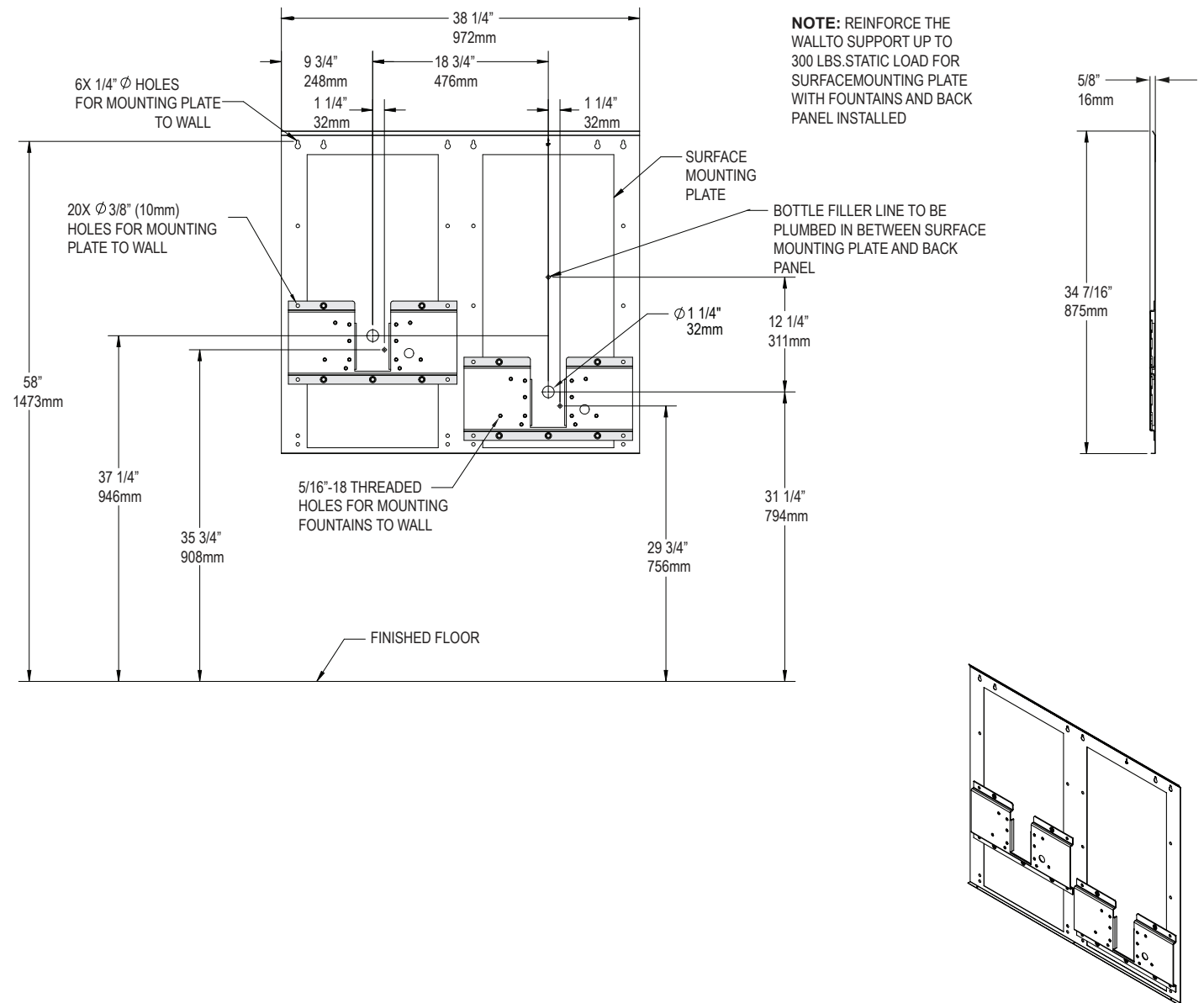
- 1. Remove mounting plate from packaging. Read this instruction sheet before proceeding.**  
These dimensions are required to obtain proper rim and bubbler heights for compliance with ANSI standard A117.1.
- 2. Install plumbing rough-ins** as per fountain instructions (supplied with fountain).
- 3. Install (2) 1/4" (6mm) screws** (not provided) into wall at 43 5/8" above finished floor. Use the two best hole locations for your application. Hang mounting plate on these screws and level mounting plate before tightening screws.
- 4. Reinforce the wall in shaded areas** for framed wall construction so that it will adequately support the water fountain. This reinforcement must support up to 300 lbs static load and provide a means for securing the mounting plate in place.
- 5. Attach mounting plate** to finished wall surface with (12) 5/16" x 2" long bolts and flat washers, 6 per bracket (not provided). Tighten securely. (Fastener must match wall type, i.e. lag screws for wood studs, bolts and anchors for masonry construction.)

## MP20RA MOUNTING PLATE INSTRUCTIONS



1. **Remove mounting plate from packaging. Read this instruction sheet before proceeding.**  
These dimensions are required to obtain proper rim and bubbler heights for compliance with ANSI standard A117.1.
2. **Install plumbing rough-ins** as per fountain instructions (supplied with fountain).
3. **Install (2) 1/4" (6mm) screws** (not provided) into wall at 43 5/8" above finished floor. Use the two best hole locations for your application. Hang mounting plate on these screws and level mounting plate before tightening screws.
4. **Reinforce the wall in shaded areas** for framed wall construction so that it will adequately support the water fountain. This reinforcement must support up to 300 lbs static load and provide a means for securing the mounting plate in place.
5. **Attach mounting plate** to finished wall surface with (12) 5/16" x 2" long bolts and flat washers, 6 per bracket (not provided). Tighten securely. (Fastener must match wall type, i.e. lag screws for wood studs, bolts and anchors for masonry construction.)

# WSMP20 MOUNTING PLATE INSTRUCTIONS



- 1. Remove mounting plate from packaging. Read this instruction sheet before proceeding.**  
These dimensions are required to obtain proper rim and bubbler heights for compliance with ANSI standard A117.1.
- 2. Install plumbing rough-ins** as per fountain instructions (supplied with fountain).
- 3. Install (2) 1/4" (6mm) screws** (not provided) into wall at 58" above finished floor. Use the two best hole locations for your application. Hang mounting plate on these screws and level mounting plate before tightening screws. Once level add 4 more screws for a total of 6.
- 4. Reinforce the wall** for framed wall construction so that it will adequately support the water fountains and bottle filler. This reinforcement must support up to 300 lbs static load and provide a means for securing the mounting plate in place.
- 5. Attach mounting plate** to finished wall surface with (20) 5/16" x 2" long bolts and flat washers, (not provided). Tighten securely. (Fastener must match wall type, i.e. lag screws for wood studs, bolts and anchors for masonry construction.)