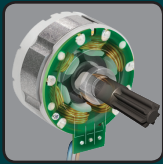




18v LXT® Lithium-Ion Brushless Cordless Curved Shaft String Trimmer (Tool Only)

Model XRU08Z

Up to 37 Minutes of Run Time on High Setting and 44 Minutes on Low Setting*



SPEED

BL™ Brushless motor delivers up to 6,000 RPM for faster cutting



CONTROL

Adjustable speed dial (0-5,000 to 0-6,000 RPM) allows the operator to match speed to application



CONVENIENCE

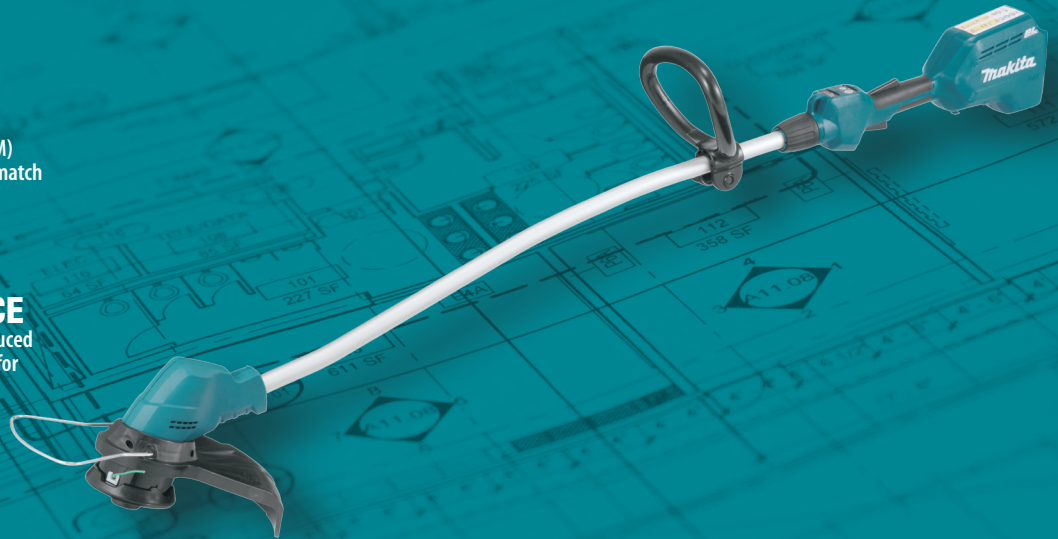
Zero emissions and reduced maintenance; no need for gas or oil



COMFORT

Telescoping curved shaft adjusts (60-1/2" - 64-1/2" length) for convenient operation in tight places

*Using one BL1850B battery under load



LXT
LITHIUM-ION

BRUSHLESS

FEATURES

- Efficient BL™ Brushless motor is electronically controlled to optimize battery energy use for up to 50% longer run time per charge
- Weighs only 7.9 lbs. with battery (battery not included) for reduced operator fatigue
- Overload Protection helps prevent the motor from over heating
- Extreme Protection Technology (XPT™) is engineered for improved dust and water resistance for operation in harsh conditions
- Compact cutting head size is ideal for trimming and precise edging with a cutting width of 11-3/4"
- Electric Brake for maximum productivity
- Easy-loading bump and feed trimmer head for increased user convenience
- Bump and feed trimmer head rotates clockwise to help direct grass clippings away from operator
- Reverse rotation system allows operator to quickly clear trimmer head of entangled grass and weeds
- Ergonomic loop handle for added stability and comfort

SPECIFICATIONS

Cutting capacity (diameter)	11-3/4"
No load speed	5,000 / 6,000 RPM
Battery	18v LXT® Lithium-Ion
Overall length	64-1/2"
Net weight (with battery)	7.9 lbs.
Shipping weight	8"
UPC code	088381-812702

STANDARD EQUIPMENT

- Trimmer head (197297-1)
- Shoulder strap (125516-5)
- Goggles (195246-2)
- Hex wrench (783217-7)

OPTIONAL ACCESSORIES

- 18v Lithium-Ion 5.0Ah battery (BL1850B)
- 18v Lithium-Ion dual port rapid optimum charger (DC18RD)
- Pro-contractor glove, large size (T-02923)
- Pro-contractor glove, extra large size (T-02939)

All specifications subject to change without prior notice. All models and accessories subject to stock on hand. The Makita Teal Color is the trade dress of Makita Corporation and is protected under common law and registered with the U.S. Patent and Trademark Office

Makita offers a wide variety of accessories. For a complete listing, please refer to the Makita General Catalog or visit our website at makitatools.com, or call 1-800-4MAKITA.