



SERVICE PARTS LIST

BULLETIN NO.
54-06-2425

SPECIFY CATALOG NO. AND SERIAL NO. WHEN ORDERING PARTS		REVISED BULLETIN	DATE
M18 FUEL™ Dual Power Triple-Panel Flood & Area Light			June 2024
CATALOG NO.	2368-20	SERIAL NO.	P62A
			WIRING INSTRUCTION

EXAMPLE:
Component Parts
(Small #) Are Included
When Ordering The
Assembly (Large #).

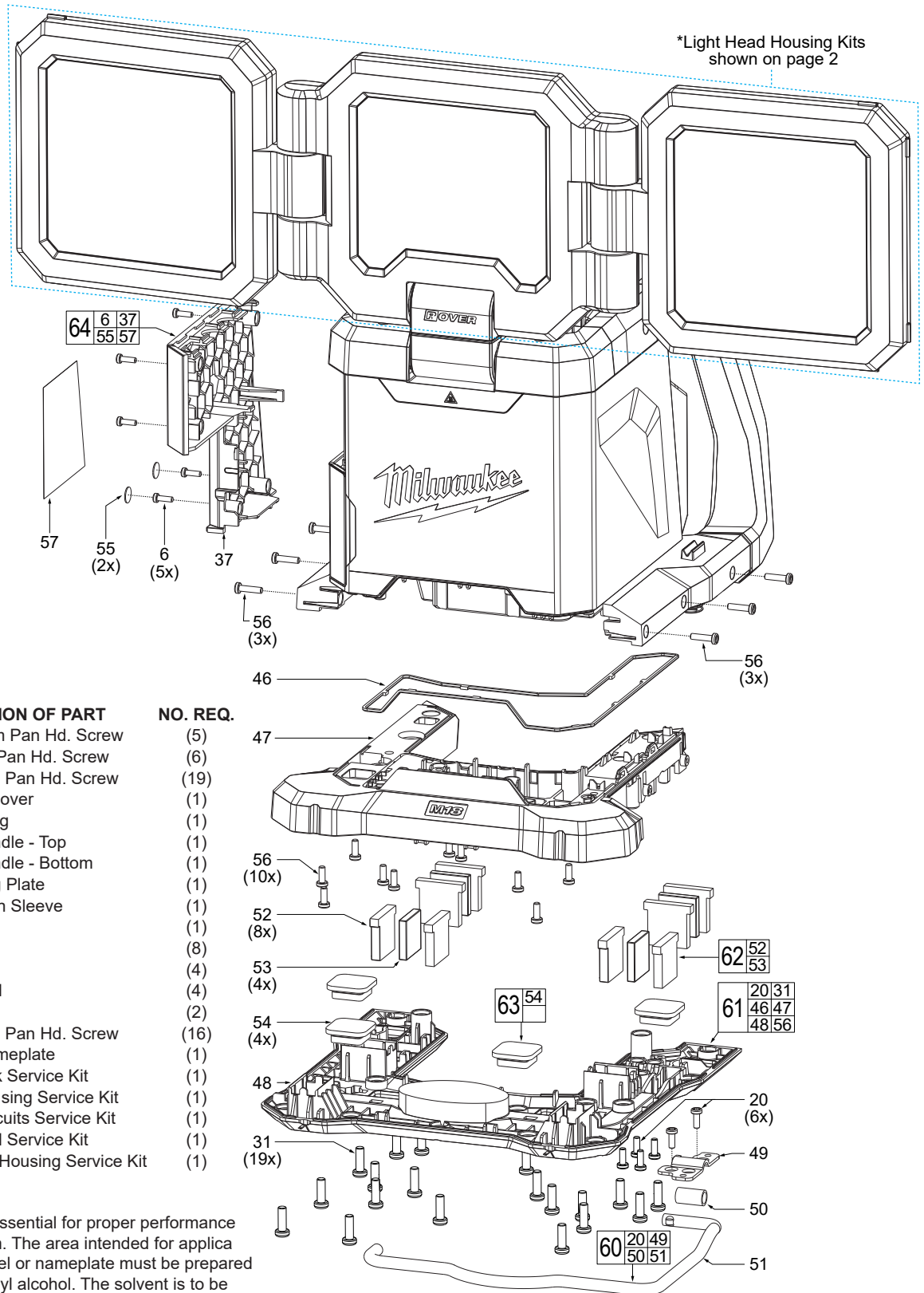


FIG.	PART NO.	DESCRIPTION OF PART	NO. REQ.
	6	05-88-1781 M2.6 x 8mm Pan Hd. Screw	(5)
	20	05-88-1782 M3 x 8mm Pan Hd. Screw	(6)
	31	05-88-1780 M4 x 12mm Pan Hd. Screw	(19)
	37	----- Left Body Cover	(1)
	46	----- Body O-Ring	(1)
	47	----- Bottom Handle - Top	(1)
	48	----- Bottom Handle - Bottom	(1)
	49	----- Hook Fixing Plate	(1)
	50	----- Hook Silicon Sleeve	(1)
	51	----- Hook	(1)
	52	----- Steel	(8)
	53	----- Magnet	(4)
	54	----- Rubber Pad	(4)
	55	----- Sticker Pad	(2)
	56	05-88-1783 M3 x 12mm Pan Hd. Screw	(16)
	57	12-20-9978 Service Nameplate	(1)
	60	14-34-2010 Rafter Hook Service Kit	(1)
	61	14-46-9941 Bottom Housing Service Kit	(1)
	62	42-70-1110 Magnet Circuits Service Kit	(1)
	63	14-46-9942 Rubber Pad Service Kit	(1)
	64	14-46-9943 Side Panel Housing Service Kit	(1)

FIG. 57 NOTES
A clean, dry surface is essential for proper performance for any adhesive system. The area intended for application of any adhesive label or nameplate must be prepared by cleaning with isopropyl alcohol. The solvent is to be applied with a clean, lint free applicator and the surface allowed to dry before applying the label or nameplate.

LIGHT HEAD HOUSING KITS

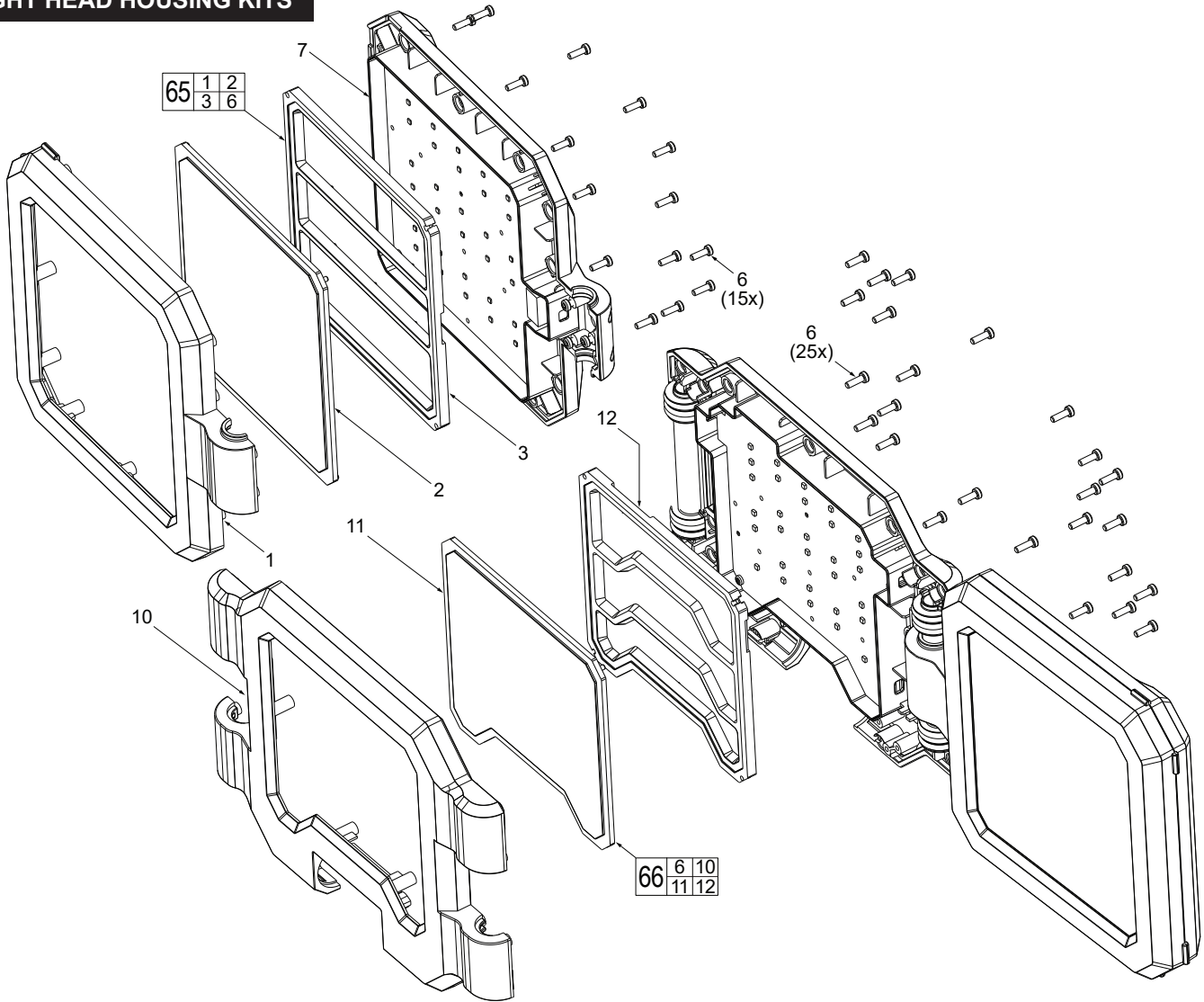


FIG.	PART NO.	DESCRIPTION OF PART	NO. REQ.
	1	Side Light Head Top Housing	(2)
	2	Side Lens	(2)
	3	Side Reflector	(2)
	6	05-88-1781 M2.6 x 8mm Pan Hd. Screw	(55)
	7	Side Light Bottom	(1)
	10	Main Light Head Top Housing	(1)
	11	Main Lens	(1)
	12	Main Reflector	(1)
65	14-46-9944	Side Light Head Housing Service Kit	(2)
66	14-46-9945	Center Light Head Housing Service Kit	(1)