



SERVICE PARTS LIST

BULLETIN NO.
54-00-3705

SPECIFY CATALOG NO. AND SERIAL NO. WHEN ORDERING PARTS		REVISED BULLETIN	DATE
M18™ GREEN Interior Rotary LASER LEVEL			July 2023
CATALOG NO.	3702-20	SERIAL NO.	M97A
		WIRING INSTRUCTION	

EXAMPLE:
Component Parts (Small #)
Are Included When Ordering
The Assembly (Large #).

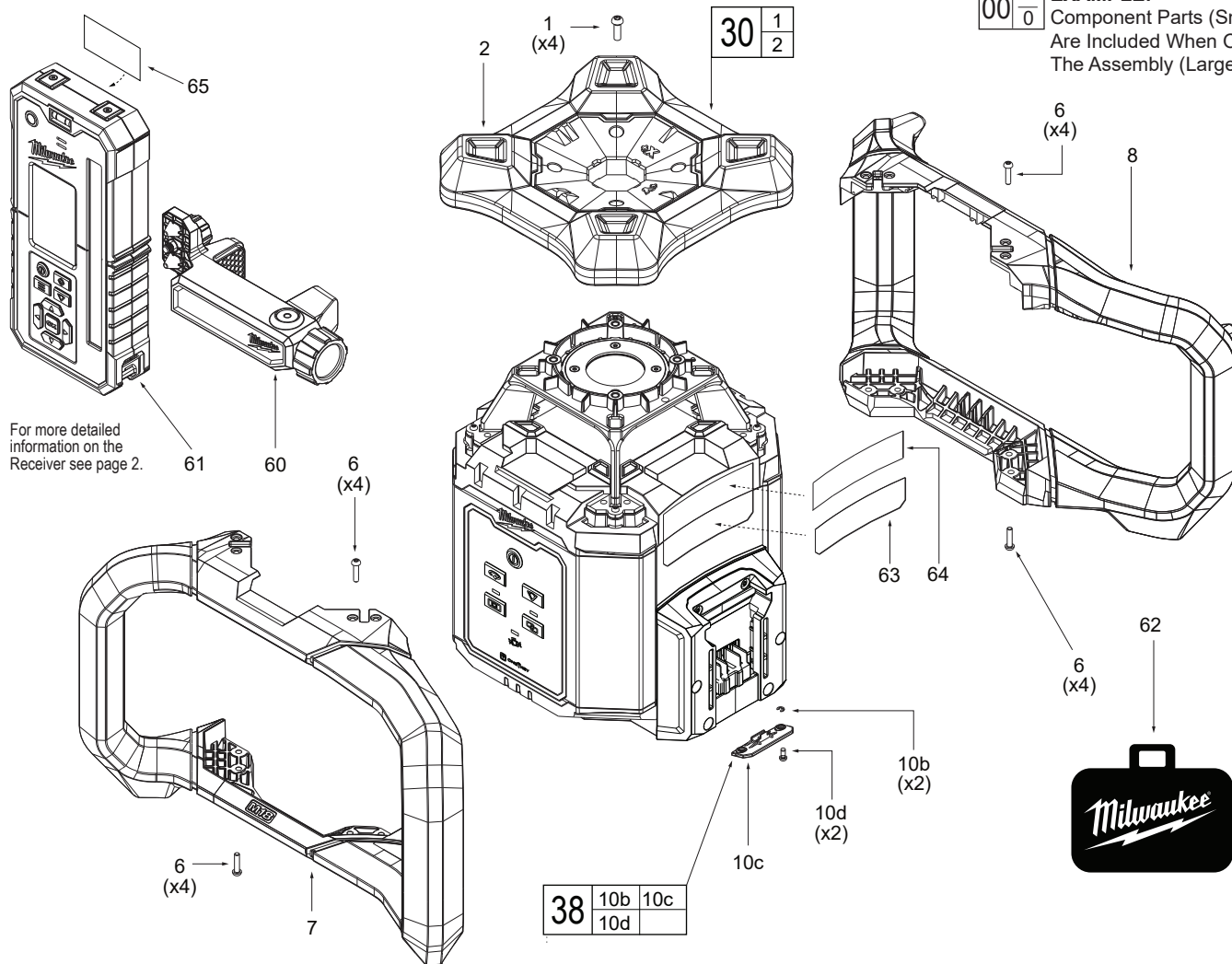


FIG.	PART NO.	DESCRIPTION OF PART	NO. REQ.
1	05-74-0747	M4 x 10mm Pan Hd. Torx T-20 Screw	(4)
2	42-38-0044	Top Bumper w/PLB PT/ Rotary Laser	(1)
6	05-74-0748	M3 x 12mm PH Torx T-10 M Screw	(16)
7	31-44-0611	Rotary Handle A-Side	(1)
8	31-44-0612	Rotary Handle w/Vert. Feet /B-Side	(1)
10b	42-70-0041	E-Clip / ID=1.9mm	(2)
10c	-----	Coin Cell Cover	(1)
10d	05-74-0758	M2.6 x 6mm T8 ST Screw with Slot	(2)
30	42-38-0043	Top Bumper w/PLB PT Kit/Rotary laser	(1)
38	31-15-0226	Coin Cell Cover Assembly	(1)
60	22-38-0106	Rotary Detector Clamp Assembly	(1)
61	3712	Green Interior Rotary Laser Receiver	(1)
62	42-55-0128	BMC - Blow Molded Case	(1)
63	12-20-0303	Service Nameplate - Laser	(1)
64	10-20-7213	Warning Label - Laser	(1)
65	12-20-0304	Service Nameplate - Receiver	(1)

FIG. NOTES
63, 64, 65 A clean, dry surface is essential for proper performance for any adhesive system. The area intended for application of any adhesive label or nameplate must be prepared by cleaning with isopropyl and alcohol. The solvent is to be applied with a clean, lint free applicator the surface allowed to dry before applying the label or name plate.

SCREW TORQUE SPECIFICATIONS				
FIG.	PART NO.	WHERE USED	SEAT TORQUE	
			(kgf-cm)	(lb-in)
10d	05-74-0758	Coincell Cover	5.0 ± 0.5	4.3 ± 0.4

Service needs pertaining to accuracy or calibration can only be performed at MILWAUKEE TOOL Central Repair:
1401 Sycamore Ave., Greenwood, MS 38930-7277 OR
2198 Southtech Drive, Greenwood, IN 46143-6725

OR Via e-Service at: www.milwaukeetool.com/e-service.

QUESTIONS: please call 1.800.SAWDUST OR
Return it to a MILWAUKEE FACTORY SERVICE CENTER location,
freight prepaid and insured. A copy of the proof of purchase
should be included with the return product.

GREEN INTERIOR ROTARY LASER - REMOTE CONTROL & RECEIVER

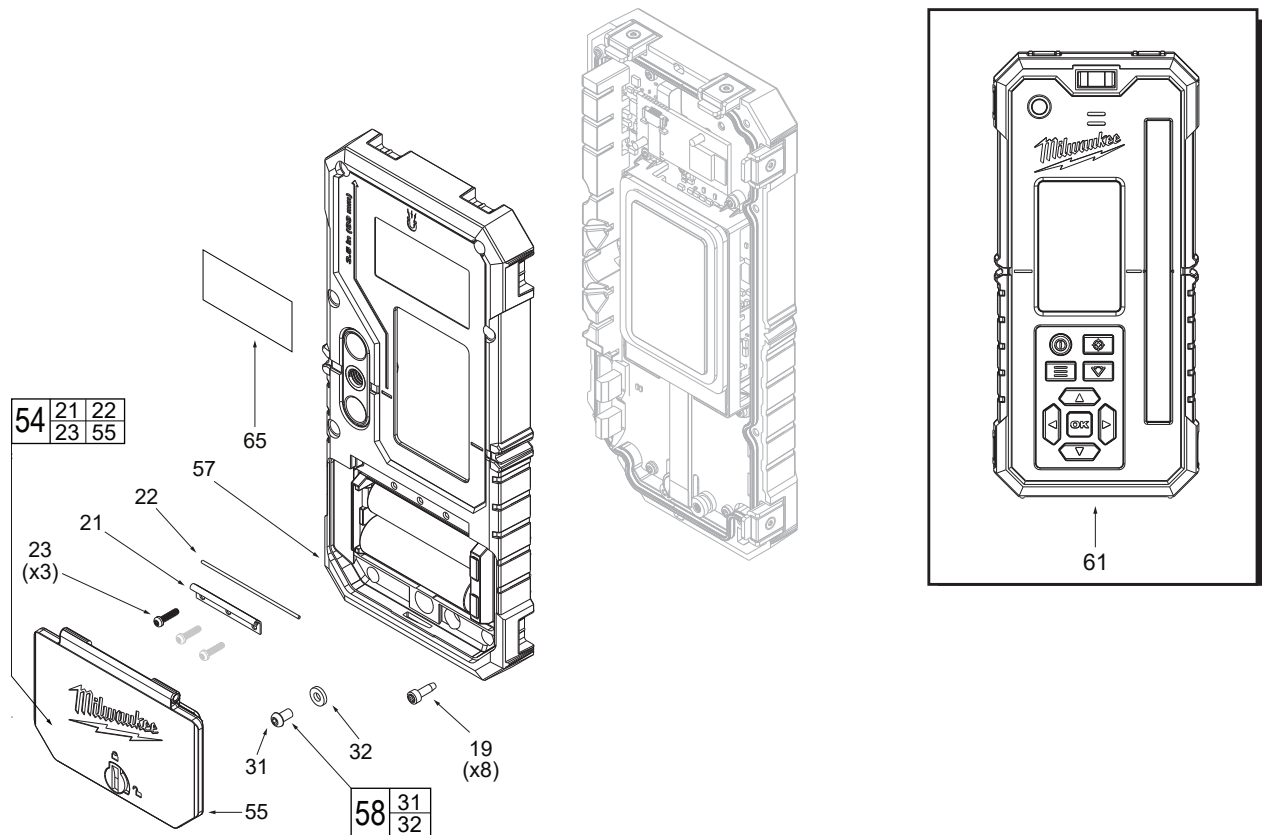


FIG.	PART NO.	DESCRIPTION OF PART	NO. REQ.
19	05-74-0755	M2.5 x 8mm Pan Head T6 Screw	(8)
21	31-21-0048	Power Cell Door Hinge	(1)
22	31-21-0049	Power Cell Door Pin	(1)
23	05-74-0754	M2 x 8mm Pan Head T6 ST Screw	(3)
31	05-74-0761	M3x5mm Pan Head H2 ST Screw	(1)
32	43-44-0613	Leak Test Gasket/ ID=3mm T=1.2mm	(1)
54	31-21-0046	Power Cell Door Kit/Combo	(1)
55	31-21-0047	Power Cell Door Assembly/Combo	(1)
57	31-50-0197	Bottom Housing Assembly/Combo	(1)
58	43-44-0612	Leak Test Gasket Kit	(1)
60	22-38-0106	Rotary Detector Clamp Assembly	(1)
61	3712	1000' Rotary Combo Remote/Detector	(1)
65	12-20-0304	Service Nameplate	(1)