



SERVICE PARTS LIST

BULLETIN NO.
54-07-3600

SPECIFY CATALOG NO. AND SERIAL NO. WHEN ORDERING PARTS		REVISED BULLETIN	DATE
Red Exterior Rotary Laser RECEIVER			July 2023
CATALOG NO.	3711	SERIAL NO.	M96A
WIRING INSTRUCTION			

EXAMPLE:
00 0 Component Parts (Small #)
Are Included When Ordering
The Assembly (Large #).

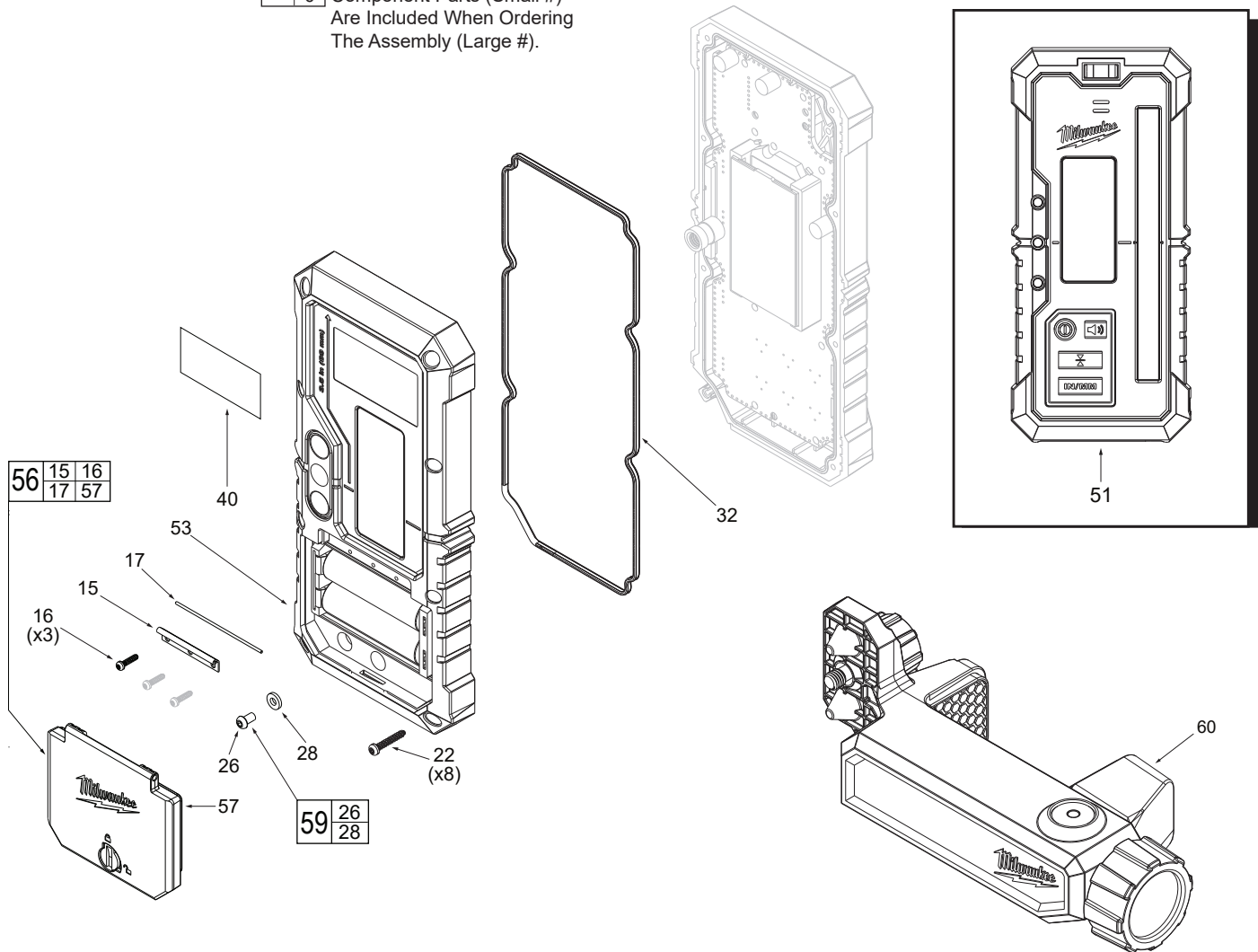


FIG.	PART NO.	DESCRIPTION OF PART	NO. REQ.
15	31-21-0048	Power Cell Door Hinge	(1)
16	05-74-0754	M2 x 8mm Pan Head T6 ST Screw	(3)
17	31-21-0049	Power Cell Door Pin	(1)
22	05-74-0756	M2.5 x 15mm Pan Head T8 Screw	(8)
26	05-74-0761	M3x5mm PH H2 Leak Test Screw	(1)
28	43-44-0613	Leak Test Gasket/ ID=3mm T=1.2mm	(1)
32	43-44-0615	Main Gasket/Detector	(1)
40	12-20-0306	Service Nameplate	(1)
51	3711	Red Exterior Rotary Laser Receiver	(1)
53	31-50-0201	Bottom Housing Assembly/Detector	(1)
56	31-21-0051	Power Cell Door Kit/Detector	(1)
57	31-21-0052	Power Cell Door Assembly/Detector	(1)
59	43-44-0612	Leak Test Gasket Kit	(1)
60	22-38-0106	Rotary Detector Clamp Assembly	(1)

FIG. NOTES

40 A clean, dry surface is essential for proper performance for any adhesive system. The area intended for application of any adhesive label or nameplate must be prepared by cleaning with isopropyl alcohol. The solvent is to be applied with a clean, lint free applicator and the surface allowed to dry before applying the label or nameplate.

Service needs pertaining to accuracy or calibration can only be performed at MILWAUKEE TOOL Central Repair:
1401 Sycamore Ave., Greenwood, MS 38930-7277
OR
2198 Southtech Drive, Greenwood, IN 46143-6725

OR Via e-Service at:
www.milwaukeetool.com/e-service.

QUESTIONS: please call 1.800.SAWDUST
OR
Return it to a MILWAUKEE FACTORY SERVICE CENTER location, freight prepaid and insured.
A copy of the proof of purchase should be included with the return product.

FIG.	PART NO.	DESCRIPTION OF PART	NO. REQ.
4	-----	Buzzer Spring	(2)
5	-----	Piezo Buzzer Standoff	(1)
6	-----	Buzzer O-Ring	(1)
7	-----	Piezo Buzzer	(1)
8	-----	PCBA	(1)
9	05-74-0543	M2.5 x 8mm PT T8 Screw	(9)
10	-----	Rear LCD Standoff	(1)
12	-----	LCD	(2)
13	43-44-0616	LCD Gasket / Detector	(2)
35	-----	Top LCD Standoff	(1)
52	31-50-0200	Top Housing Assembly/3711	(1)
54	44-06-0118	Front LCD Kit / Detector	(1)
55	44-06-0119	Rear LCD Kit / Detector	(1)
58	14-46-0363	Piezo Buzzer Kit	(1)

EXAMPLE:
Component Parts (Small #)
Are Included When Ordering
The Assembly (Large #).

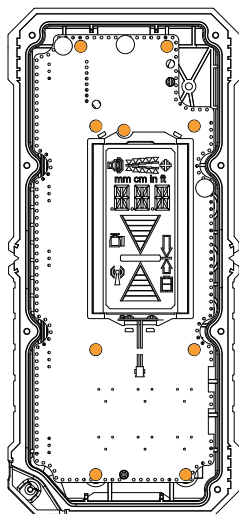
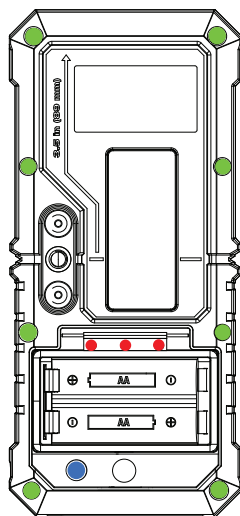
00 0

55 10 12
13

58 4 5
6 7

54 12 13
35

9 (x9)



SCREW TORQUE SPECIFICATIONS

FIG.	PART NO.	DESCRIPTION OF FASTENER	WHERE USED	SEAT TORQUE	
				(kgf-cm)	(lb-in)
22	05-74-0756	M2.5 x 15mm T-8 Screw	Front and Rear Housings	6.0 ± 0.5	5.2
16	05-74-0754	M2 x 8mm PT T-6 Screw	Rear Housing and Battery Door	3.5 ± 0.5	3.0
26	05-74-0761	M3 x 5mm Screw	Rear Housing and Leak Test	4.0 ± 0.5	3.5
9	05-74-0543	M2.5 x 8mm PT T-8 Screw	PCBA and Front Housing	5.0 ± 0.5	4.3