



Landscape Dripline System

**Water
Connections**

**Emitter
Tubing**

Tubing

**Fittings &
Tools**



The Faster, Smarter Way to Drip Irrigate!

WHERE Are You Watering?

► **Watering Solutions at a Glance** *See following pages for typical applications*

Ideal for:



► **Vegetable Gardens**

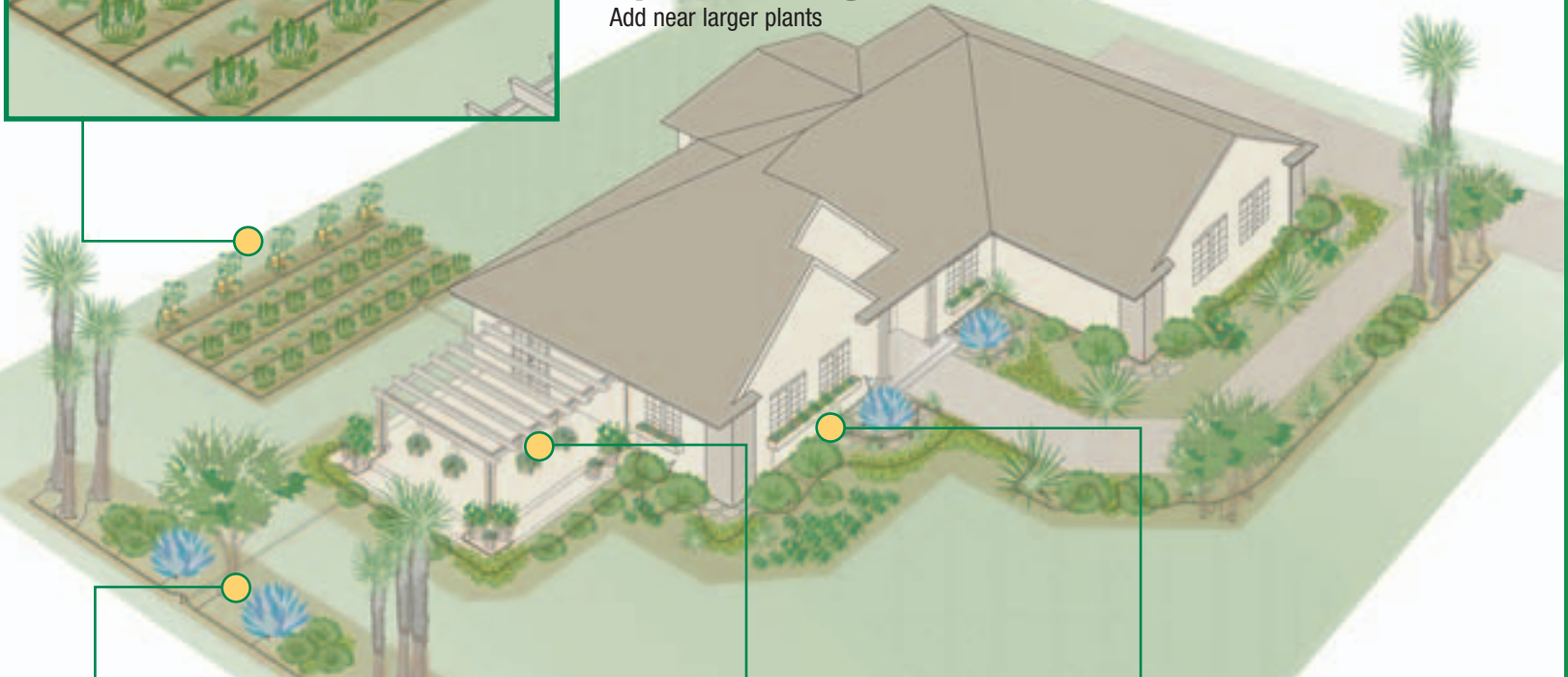
Solution:

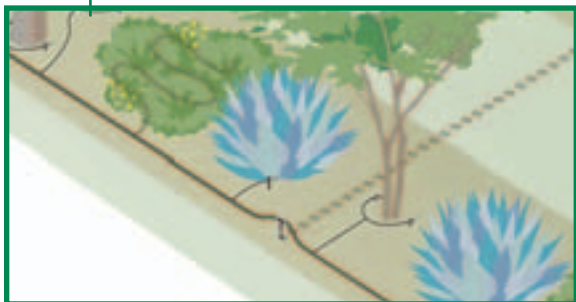
1/2" Emitter Tubing

Place in rows

Spot Watering Emitters

Add near larger plants





► *Widely Spaced Plants*

Solution:

Spot Watering Emitters

Place at each plant



► *Landscape Areas*

Solution:

1/2" Emitter Tubing

Use in larger areas

1/4" Emitter Tubing

Extend watering to narrow planting areas

Spot Watering Emitters

Apply to trees and large shrubs



► *Patio Plants*

Solution:

Spot Watering Emitters

Place in each planter

1/4" Emitter Tubing

Use in larger planters

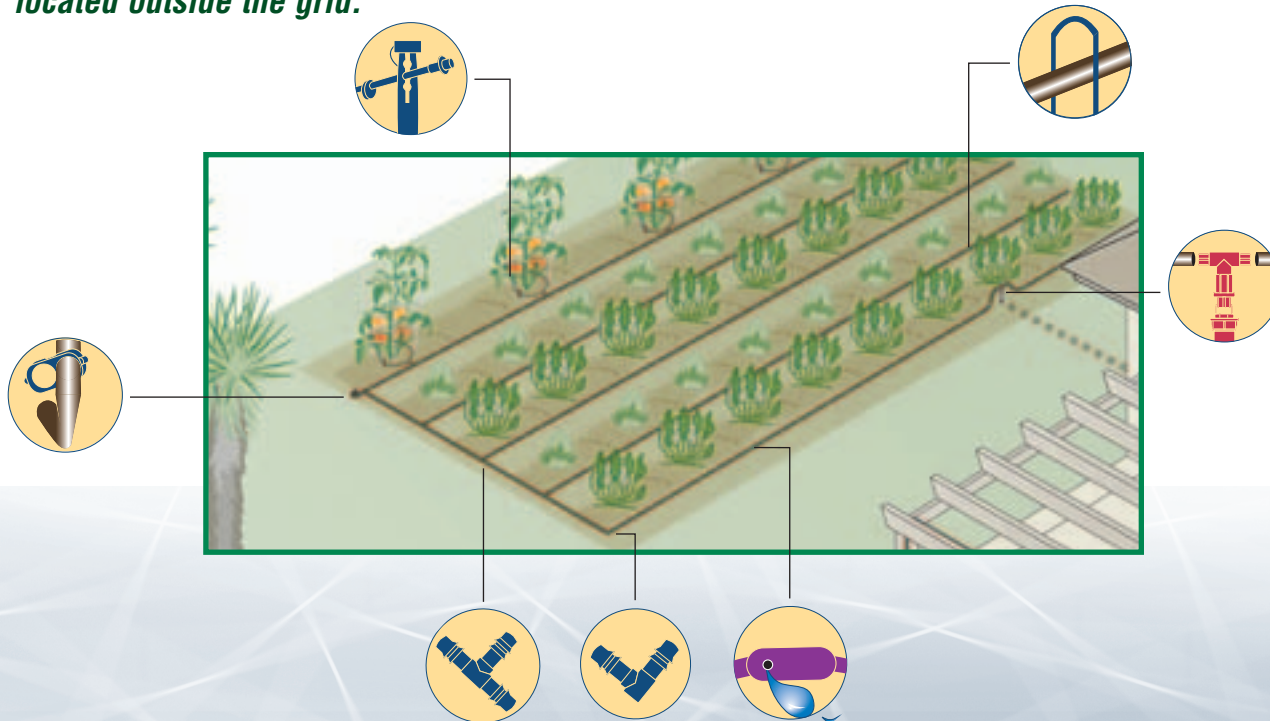
The faster, smarter way to drip irrigate

WHERE Are You Watering?

► Vegetable Garden

.....

To water closely spaced plants in a vegetable garden, use 1/2" Emitter Tubing connected as a grid spaced 18" apart. In this approach, your Landscape Dripline System soaks the entire area. Use Spot Watering Emitters, with 1/4" Tubing and 1/4" Tubing Stakes, to add extra watering for plants located outside the grid.



▶ WHAT YOU NEED

Water Connections

Suggested Quantity:



OR



Faucet Connection Kit FCKIT-1PK

Connect system to any outdoor faucet

1 per zone



Riser Connection Kit RCKIT-1PK

Convert an 1800™ spray head or a riser to a drip zone

1 per zone

Tubing



1/2" Emitter Tubing ET63918-100

Place in planting areas

100 ft. coil



1/2" Tubing T63-100

Run water to 1/2" Emitter Tubing

100 ft. coil

Fittings and Tools

Suggested Quantity:



1/2" Elbows BE50-4PK

Connect 2 pieces of 1/2" tubing in an "L" shape

4 per planting area



1/2" Couplings BC50-4PK

Connect 2 pieces of 1/2" tubing

2-4 per 50 ft of 1/2" tubing (avg.)



1/2" End Closure EC50-2PK

Use with 1/2" tubing to allow flushing and draining of system

1 per zone



1/2" Tees BT50-4PK

Connect 3 pieces of 1/2" tubing in a "T" shape

4-6 per 50 ft of 1/2" tubing (avg.)

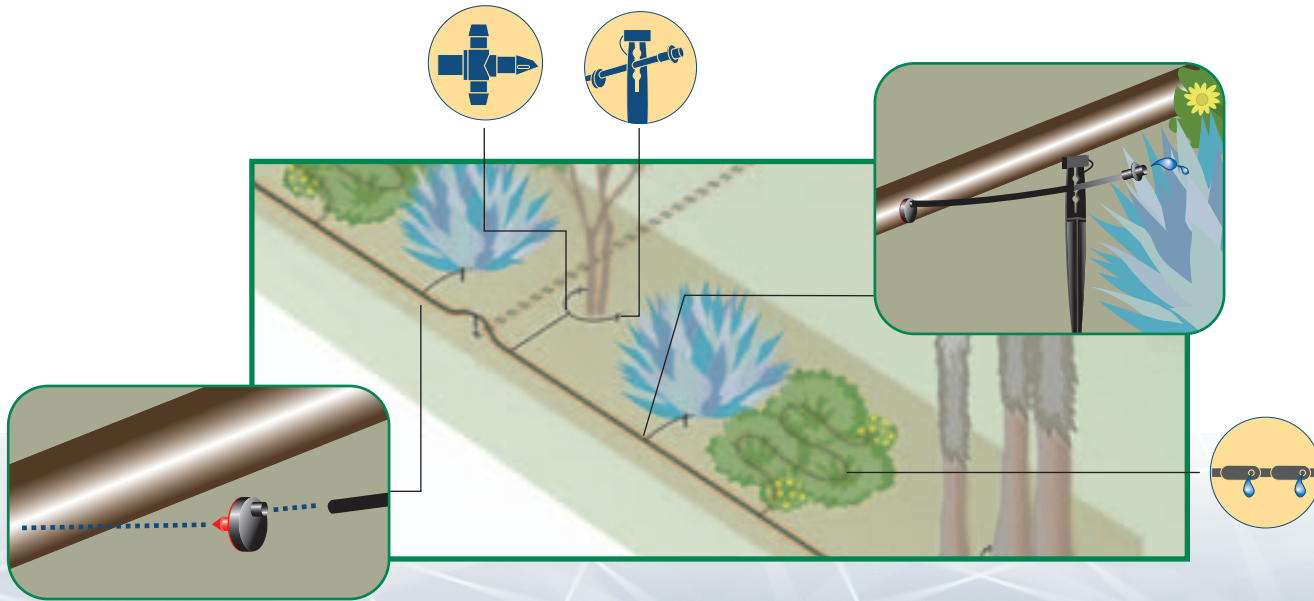
The faster, smarter way to drip irrigate

WHERE Are You Watering?

► Widely Spaced Plants

.....

Insert Spot Watering Emitters into the 1/2" tubing which leads from your water source. These Spot Watering Emitters regulate flow at 1.0 or 2.0 gallons per hour (GPH). To complete your layout, simply attach short lengths of 1/4" Tubing to the Spot Watering Emitters and stake near the base of each plant.



▶ WHAT YOU NEED

Water Connections

Suggested Quantity:



OR



Faucet Connection Kit FCKIT-1PK

Connect system to any outdoor faucet

1 per zone



Riser Connection Kit RCKIT-1PK

Convert an 1800™ spray head or a riser to a drip zone

1 per zone

Tubing



1/2" Tubing T63-100

Run water to 1/2" Emitter Tubing

100 ft. coil



1/4" Tubing T22-50

Use with Spot Watering Emitters or to run water to 1/4" Emitter Tubing

50 ft. coil

Fittings and Tools

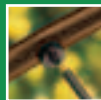
Suggested Quantity:



1/4" Barbed Couplings BC25-10PK

Connect 2 pieces of 1/4" Tubing or Emitter Tubing

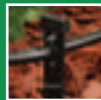
2-4 per 50 ft of
1/4" tubing (avg.)



Spot Watering Emitters SW10-10PK or SW20-10PK

Add supplemental watering to individual plants

1 per small plant,
2-3 per large plant



1/4" Tubing Stakes TS25-10PK

Stake 1/4" Tubing or secure Spot Watering Emitters

10 per 50 ft of
1/4" tubing



Galvanized Stakes GS50-10PK

Secure 1/4" tubing to the ground

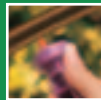
10 per 50 ft of
1/2" tubing



1/2" End Closure EC50-2PK

Use with 1/2" tubing to allow flushing and draining of system

1 per zone



Emitter Tool ET-1PK

Simplifies adding or removing Spot Water Emitters, 1/4" fittings and plugs

1

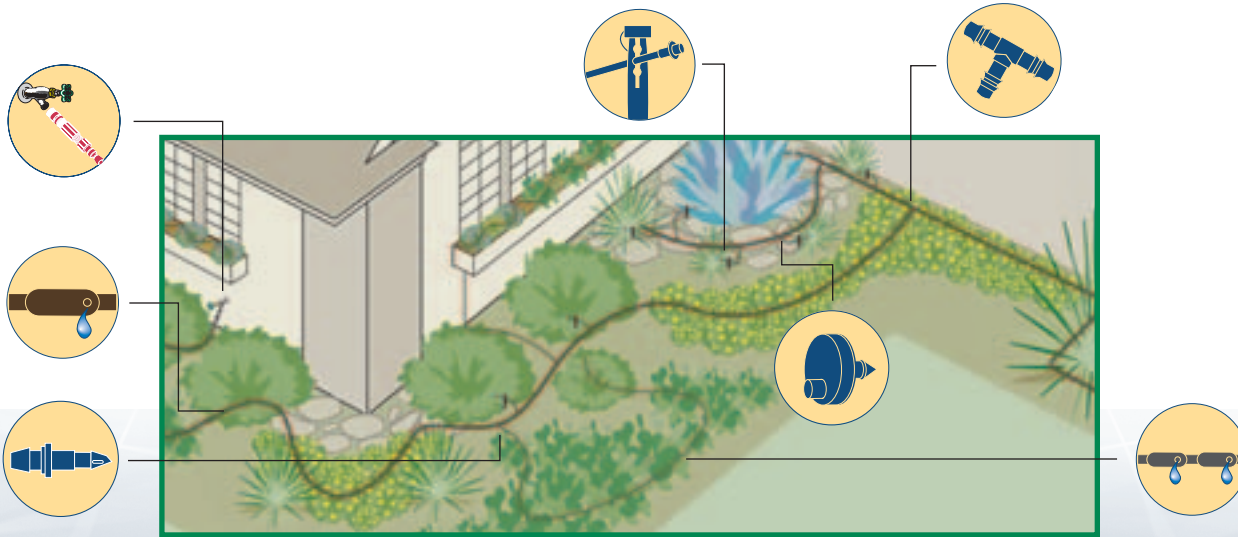
The faster, smarter way to drip irrigate

WHERE Are You Watering?

► Landscape Areas

.....

Use a combination of Emitter Tubing and Spot Watering Emitters to reach all areas of your planting bed. For closely spaced plants such as ground covers, use 1/2" Emitter Tubing connected in a grid pattern. The recommended spacing between 1/2" Emitter Tubing runs is 18" to 24". Extend irrigation to narrow planting areas using 1/4" Emitter Tubing. To reach widely spaced bushes or trees, tap off of the main 1/2" Tubing by using 1/4" Tubing and Spot Watering Emitters and 1/4" Tubing Stakes as shown.



▶ WHAT YOU NEED

Water Connections

Suggested Quantity:



OR



Faucet Connection Kit FCKIT-1PK
Connect system to any outdoor faucet

1 per zone



Riser Connection Kit RCKIT-1PK
Convert an 1800™ spray head or a riser to a drip zone

1 per zone

Tubing



1/2" Emitter Tubing ET63918-100
Place in planting areas

100 ft. coil



1/4" Emitter Tubing ET25512-50
Place in planting areas

50 ft. coil



1/2" Tubing T63-100
Run water to 1/2" Emitter Tubing

100 ft. coil



1/4" Tubing T22-50
Use with Spot Watering Emitters or to run water to 1/4" Emitter Tubing

50 ft. coil

Fittings and Tools

Suggested Quantity:



1/2" Elbows BE50-4PK
Connect 2 pieces of 1/2" tubing in an "L" shape

4 per planting area



1/2" Couplings BC50-4PK
Connect 2 pieces of 1/2" tubing

2-4 per 50 ft of
1/2" tubing (avg.)



1/2" End Closure EC50-2PK
Use with 1/2" tubing to allow flushing and draining of system

1 per zone



1/2" Tees BT50-4PK
Connect 3 pieces of 1/2" tubing in a "T" shape

4-6 per 50 ft of
1/2" tubing (avg.)



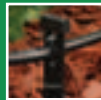
1/4" Barbed Couplings BC25-10PK
Connect 2 pieces of 1/4" Tubing or Emitter Tubing

2-4 per 50 ft of
1/4" tubing (avg.)



Spot Watering Emitters SW10-10PK or SW20-10PK
Add supplemental watering to individual plants

1 per small plant,
2-3 per large plant



1/4" Tubing Stakes TS25-10PK
Stake 1/4" tubing or secure Spot Watering emitters

10 per 50 ft of
1/4" tubing



Galvanized Stakes GS50-10PK
Secure 1/4" tubing to the ground

10 per 50 ft of
1/2" tubing



Emitter Tool ET-1PK
Simplifies adding or removing Spot Water Emitters, 1/4" fittings and plugs

1

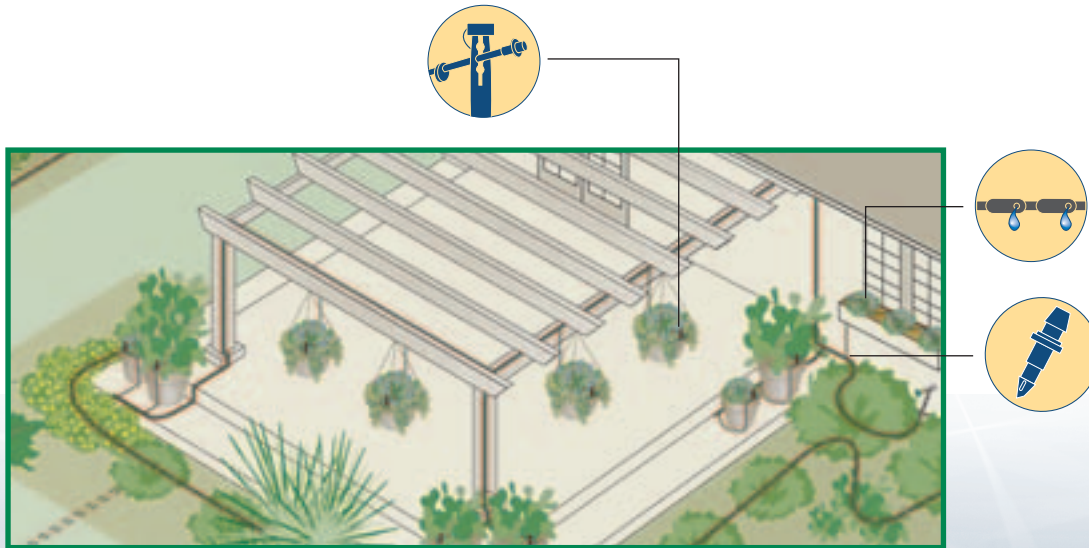
The faster, smarter way to drip irrigate

WHERE Are You Watering?

► **Patio Plants**



Depending upon the size of your plants and containers, your patio watering system may consist of 1/4" Emitter Tubing or Spot Watering Emitters placed directly on top of the potting soil. Run 1/4" Tubing from the main 1/2" Tubing. For larger plants, use 1/4" Emitter Tubing in a loop around the plant. For smaller plants, use 1/4" Tubing and 1/4" Tubing Stakes to direct water at the base of each plant.



▶ WHAT YOU NEED

Water Connections

Suggested Quantity:



OR



Faucet Connection Kit FCKIT-1PK
Connect system to any outdoor faucet

1 per zone



Riser Connection Kit RCKIT-1PK
Convert an 1800™ spray head or a riser to a drip zone

1 per zone

Tubing



1/2" Emitter Tubing ET63918-100
Place in planting areas

100 ft. coil



1/2" Tubing T63-300
Run water to 1/2" Emitter Tubing

100 ft. coil



1/4" Tubing T22-50
Use with Spot Watering Emitters or to run water to 1/4" Emitter Tubing

50 ft. coil

Fittings and Tools

Suggested Quantity:



1/4" Barbed Couplings BC25-10PK
Connect 2 pieces of 1/4" Tubing or Emitter Tubing

2-4 per 50 ft of 1/4" tubing (avg.)



1/4" Barbed Tees BT25-10PK
Connect 3 pieces of 1/4" tubing in a "T" shape or tap into the side of 1/2" tubing

2-4 per 50 ft of 1/4" tubing (avg.)



Spot Watering Emitters SW10-10PK or SW20-10PK
Add supplemental watering to individual plants

1 per small plant, 2-3 per large plant



1/4" Tubing Stakes TS25-10PK
Stake 1/4" tubing or secure Spot Watering emitters

10 per 50 ft of 1/4" tubing



Galvanized Stakes GS50-10PK
Secure 1/4" tubing to the ground

10 per 50 ft of 1/2" tubing



1/2" End Closure EC50-2PK
Use with 1/2" tubing to allow flushing and draining of system

1 per zone



Emitter Tool ET-1PK
Simplifies adding or removing Spot Water Emitters, 1/4" fittings and plugs

1

The faster, smarter way to drip irrigate