

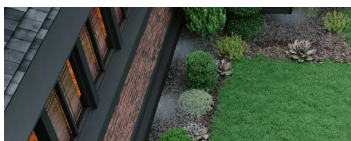
# SQ Series Square Pattern Nozzles

Precise and efficient, low-volume spray nozzle for irrigation in small areas



The SQ Series is the most efficient, low-volume spray solution for precision irrigation of small areas. The SQ Series' square spray pattern and pressure compensation offers increased efficiency and control, reducing overspray, property damage and liability.

Unique edge-to-edge capability reduces the number of nozzles needed, which decreases cost and dramatically reduces installation time. Simplify design and installation with the flexibility of applications: one nozzle throws 2.5' or 4' (0.8m or 1.2 m) and can be used on a variety of spray heads and risers. It even meets micro irrigation system requirement for less than 26 gph flow rate at 30 psi. SQ Series nozzles provide up to 65% water savings, and are great for narrow planting beds, parking lot islands, walkways, parkways, street medians, and areas around trees and shrubs.



Garden Beds



Sidewalks



Medians



Trees

## Precision and Efficiency

- Designed to precisely irrigate small areas
- Great for corners in narrow planting beds, parking lot islands, walkways, parkways, street medians, and around trees and shrubs
- Commercial grade nozzle is pressure compensating and virtually mist-free – even at the maximum operating pressure. This ensures optimum coverage for non-turf applications from 20 to 50 psi
- Meets micro irrigation system requirement with less than 26 gph flow rate at 30 psi

## Versatile Installation

- Simplify design and installation with the flexibility of applications
- Patented design provides the designer and the installer with the option of 2.5' or 4' throws (0.8 m or 1.2 m)
- Can be installed on a variety of spray heads and risers

## Savings on Material and Labor Costs

- Unique edge-to-edge capability reduces the number of nozzles needed, which decreases cost and dramatically reduces installation time
- Square spray pattern and pressure compensation offer increased efficiency and control, reducing overspray, property damage, and liability





# SQ Series Square Pattern Nozzles

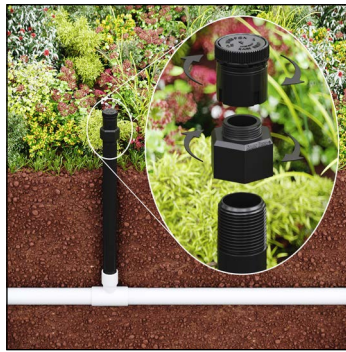
## Installation Options:



**SQ Nozzle on PolyFlex Riser Assembly (PFR-FRA)**



**SQ Nozzle on 1800 Spray Body Assembly**

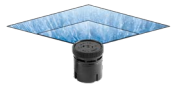


**SQ Nozzle on Schedule 80 Riser Assembly**

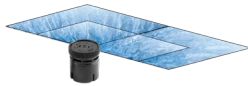


**SQ Nozzle on Poly Flex Riser and Stake Assembly (PFR-RS)**

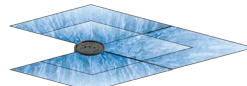
## Models:



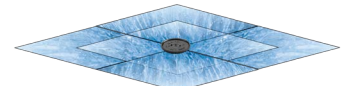
**Model: SQ-QTR**  
Quarter Wetting Pattern



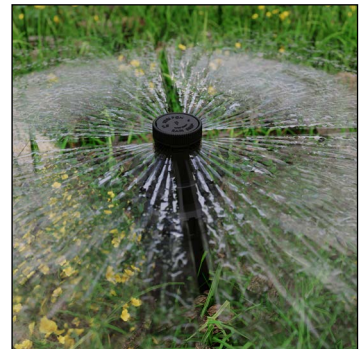
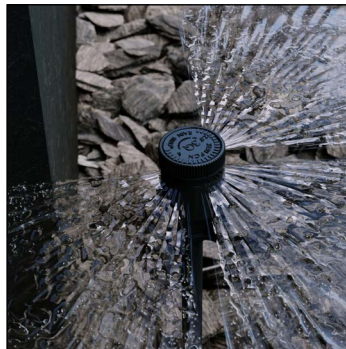
**Model: SQ-HLF**  
Half Wetting Pattern



**Model: 3QTR**  
Three Quarter Wetting Pattern



**Model: FUL**  
Full Wetting Pattern



## Nozzle Accessories

- **PFR-12:** 12" PolyFlex Riser (riser tube only)
- **PFR-FRA:** 12" (30.5 cm) PolyFlex Riser and 1/2" adapter for PVC (SQ-ADP Nozzle Adapter sold separately)
- **PFR-FRA24:** 24" (61.0 cm) PolyFlex Riser and 1/2" adapter for PVC (SQ-ADP Nozzle Adapter sold separately)
- **PFR-RS:** 12" (30.5 cm) PolyFlex Riser and 7" (17.8 cm) stake
- **SQ-ADP:** SQ Nozzle *adapter only* (Connects SQ Nozzles to PolyFlex Risers)
- **SQ-ADP12:** SQ Nozzle adapter with 12" PolyFlex Riser
- **XQ-100:** 1/4" Distribution tubing for PFR-RS Riser

## Operating Ranges:

- **Flow Rates:** 6, 12, 18, and 24 gph (22.7, 45.4, 68.1, and 90.8 l/hr)
- **Pressure:** 20 to 50 psi (1.4 to 3.5 bar)
- **Required Filtration:** 40 mesh



[rainbird.com](http://rainbird.com)

® Registered trademark of Rain Bird Corporation

© 2021 Rain Bird Corporation 10/21

D42032