

NEOREST®

MS992CUMFG

NEOREST® 700H Elongated Toilet/Bidet

FEATURES

- TORNADO FLUSH® siphon jet flushing system, ultra-high efficiency (1.0GPF/3.8LPF and 0.8GPF/3.0LPF).
- CEFIONTECT® ceramic glaze minimizes waste from sticking to porous ceramic surfaces
- Dual flush function
- Universal height
- Auto lid open/close, auto flush
- EWATER+
- Multifunctional remote control
- Adjustable heated seat
- Adjustable spray position
- Washlet with three wash modes (front, rear, soft)
- Oscillating and pulsing comfort washing
- Energy saver timer
- Built-in air purifying system
- Back-up manual flush
- ADA Compliant

COMPONENTS

- SN992M - Top Unit
- CT992CUMFG - Elongated Bowl

Note: SN992M Only compatible with CT992CUMFG

COLORS/FINISHES

- #01 Cotton

PRODUCT SPECIFICATION

The NEOREST 700H with the TORNADO FLUSH flushing system toilet shall be 1.0GPF/3.8LPF and 0.8 GPF/3.0 LPF. Toilet shall have CEFIONTECT ceramic glaze and be at Universal Height. Toilet shall be of skirted design, elongated front bowl with auto open and close seat. Toilet shall be **TOTO Model MS992CUMFG**.



EWATER+



CEFIONTECT



TORNADO FLUSH

CODES/STANDARDS

- Meets and exceeds ASME A112.4.2, ASME A112.19.2/CSA B45.1, ASME A112.18.1/CSA B125.1, UL 1431, CSA C22.2 # 68
- Certifications: IAPMO(cUPC), State of Massachusetts, City of Los Angeles and others
- Code Compliance: UPC, IPC, NSPC, and others
- ADA Compliant
- Complies with CA Prop 65 warning requirements



MS992CUMFG

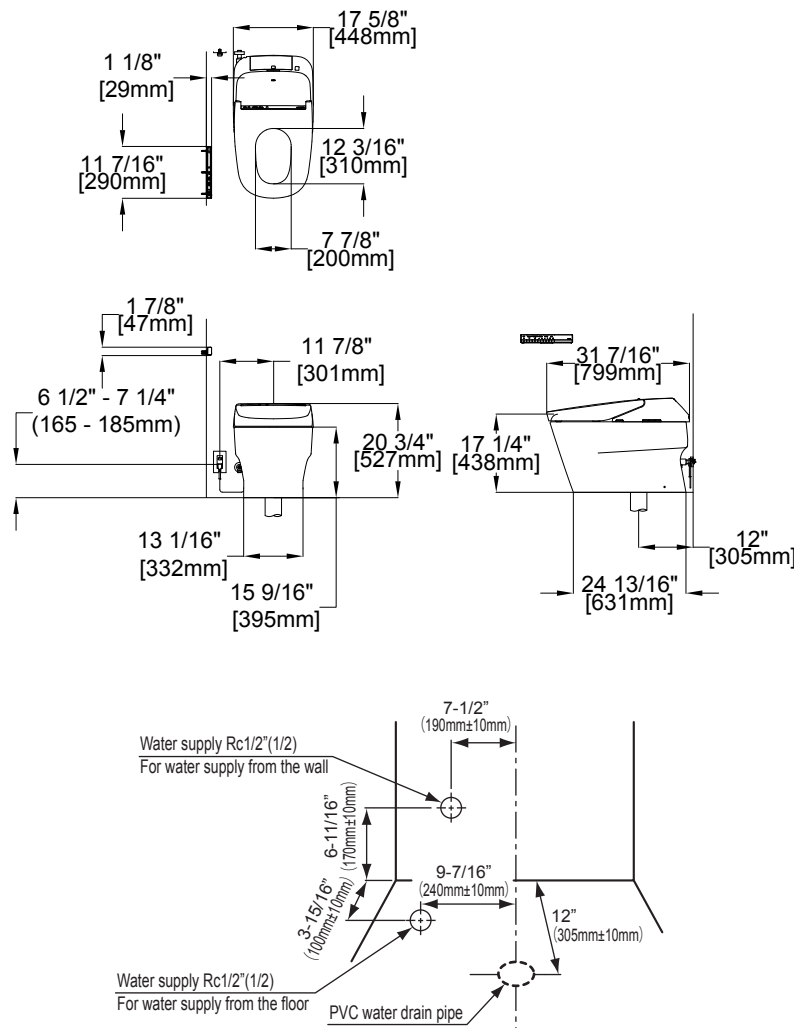
NEOREST® 700H Elongated Toilet/Bidet

SPECIFICATIONS

Water Use:	1.0 GPF/3.8 LPF & 0.8 GPF/3.0 LPF
Flush System:	TORNADO FLUSH Siphon Jet
Water Pressure:	Min 7 PSI (0.05MPa) Flowing Max 105 PSI (0.75 MPa) Static
Min Flow Rate:	2.64 gal/min (10 L/min)
Water Surface:	8-3/4" x 7-1/4"
Trap Diameter:	2-1/8" (54 mm)
Rough In:	12" rough in Warning: If there is a base board in the restroom, the center of the floor drain should be a minimum of 12" from the base board.
Trap Seal:	2-1/16" (53 mm)
Warranty:	Three Year Limited (Residential) One Year Limited (Commercial)
Material:	Bowl: Vitreous china Seat and cover: Plastic
Shipping Weight:	Top Unit - SN992M 17.6lbs Bowl Unit - CT992CUMFG 106lbs
Shipping Dimensions:	SN992M - 20-5/8" x 34-13/16" x 8-13/16" CT992CUMFG - 18-13/16" x 33-1/4" x 24-7/8"
Power Rating	120V AC, 60 Hz. 1300W
Power Cord	Maximum length: 4 ft (1.2 m)
Water Feature	Adjustable Water Flow Rate
Rear Washing	from 9.1 to 14.5 oz/min.
Soft Washing	from 10.8 to 14.5 oz/min.
Front Washing	from 9.8 to 14.5 oz/min.
Wide Front Washing	from 11.8 to 14.5 oz/min.
Washing Spray Temperature	Minimum: 86° F/30° C Maximum: 104° F/40° C
Safety Feature	Temperature fuse and float switch
Drying Feature	Air Temperature: High: About 130°F/55°C Low: About 95°F/35°C
Capacity of Air	10.2 ft³/min
Safety Feature	Temperature fuse
Seat Warming Feature	Surface Temperature: Minimum: 82° F/28° C Maximum: 97° F/36° C
Seat Heater Capacity	60W
Safety Feature	Thermal fuse
Air Purifying Feature	Method: O ₂ Deodorizer Air Volume: 5.7 ft³/min
Ambient Temperature Range	33°F/1°C to 104°F/40°C
Product Size	17-5/18" x 31-7/16" x 20-3/4"
Weight	Net: 123.6 lbs.
Floor to Seat Height:	17 1/4" (438mm)

INSTALLATION NOTES

- For use with potable water only. Do not use with recycled water.



TOTO®

These dimensions and specifications are subject to change without notice